

5E Series Tractors

5055E (55 hp/40 kW), 5065E (65 hp/48 kW), 5075E (75 hp/55 kW)



Meet the little giant

Do you have livestock? Do you need to harvest cherries or almonds? Are you running a small vineyard? The new 5E Series tractor from John Deere meets all the basic needs of small-scale and part-time farmers as well as speciality users and gardeners.

If you thought John Deere performance was only for big operators, you'll be pleased to discover that we put all our engineering expertise into creating the 5E.

Experience the 5E Series tractors

- **Performance** – 2.9 litre 3-cylinder PowerTech M Engine with turbocharger and charge air cooler
- **Versatility** – 9 forward and 3 reverse speeds, choice of 40 kW (55 hp), 48 kW (65 hp) or 55 kW (75 hp) with 540 Standard & Economy PTO in base (all models)
- **High lift capacity** – up to 1.8 tonnes
- **Perfect turning radius and joystick operation** for comfortable loader work
- **Wide choice of attachments** for many different applications
- **Attractive standard features** – e.g. beacon light, rear work light, a double actuating rear SCV and full-coverage fenders
- **Choice** between 2-wheel-drive and 4-wheel-drive versions
- **Customised models** – see your dealer for versions to meet your exact needs

The bottom line? You get 100% John Deere dependability, high performance and low operating costs. It's an investment you'll be glad you made – for many years to come.



All-round versatility

5E Series tractors provide John Deere dependability and performance to a wide range of applications, such as:

- Arable farming tasks like ploughing, cultivating and seeding
- Small-scale livestock maintenance and transport (e.g. cows, horses, pigs)
- Daily duties in dairy production
- Specialised farming needs in vineyards and olive orchards
- Diverse chores in private gardens, parks and estates as well as hobby farmer work
- Front loader work

John Deere knows that specialised operations require reliable equipment to perform difficult tasks, such as nimbly moving about in small spaces. The 5E Series tractors not only offer you this easy manoeuvrability but also excellent load capacity and optimised weight distribution to give you the power and stability you need.

Whatever your unique needs are, the 5E Series tractor from John Deere keeps your part-time and full-time operations running smoothly day after day.



Field-proven engine technology

All 5E Series tractors are powered by the 3 cylinder, 2.9 L PowerTech M engine for best performance and fuel efficiency. The integrated turbocharger is an exhaust gas driven compressor used to boost engine power by increasing the air intake volume. So you get more power from each combustion – and efficiency that conforms to Stage III A emission standards.

The tiltable one-piece hood is another attraction, as well as the position of the fuel tank below the operator platform. The midplatform position of the tank provides easy access for fuelling and also improves the overall weight distribution of the tractor. A steel cover under the tank protects it from damage from below.

To keep you going from sunrise to sunset, the 68 litre tank provides you with enough fuel for long working days in the field.



Optimised fuel tank

The 68 litre fuel tank ensures easier access and better weight distribution

Lean green power

The new 2.9 L PowerTech M engine fulfils Stage III A emission norms

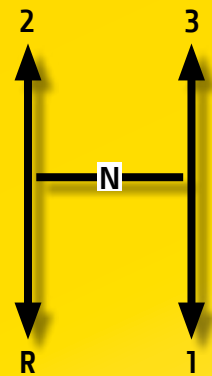


A tractor for each job on the farm

For either MFWD or 2WD, the 5 Series tractors offers a solid transmission with 9 forward and 3 reverse speeds. All gears are synchronised for smooth shifting when the tractor is in motion. Shifting is further optimised by the dry dual clutch with cerametallic pads.

Most of all, inline shifting allows fast and efficient toggling between 2nd and reverse, the most commonly used gears in tasks requiring a high level of manoeuvrability, such as front loader work. The clever arrangement of the gears makes it simple to shift back and forth between powering forward and easing backwards.

Braking is smooth and easy too, performed by self-adjusting, self-equalising, hydraulically actuated oil immersed disc brakes.



Inline shifting

With 2nd and Reverse in one line across from each other, it's easy to perform complicated tasks requiring a lot of manoeuvring back and forth.

Shifting made easy

All 5E Series transmissions are easy to operate thanks to side shift levers and inline-shifting



Clear and open design, comfortable ride

The 5E is built without a cab for utmost agility and flexibility. The roll-over bar can even be folded down, provisionally, if you need to move through a small barn door, for instance. You'll also be pleased to discover that the tractor creates minimal noise and the operator's seat has built-in shock absorption, so you'll feel so comfortable and you won't mind being on board for many hours at a time.

The layout of the controls has been optimised with your needs in mind. Look around you. Everything you need is within easy reach and clever colour-coding helps you quickly find the control you are looking for:

- Orange = forward/reverse gears and brakes
- Yellow = PTO (Power Take Off)
- Black = hydraulics



Two ways to mount

Get into the operator's seat from either the left or the right side of the tractor



Colour-coordinated

Find the controls you need based on the practical colour-coding system

Sun-protected

An optional roof provides you with protection from sun and precipitation



Easy going

The isolated operation station ensures a high level of shock absorption to keep your ride as free of vibrations as possible

Robust and precise hydraulics

All 5E Series tractors are equipped with a tandem hydraulic pump, delivering 71 l/min for your hydraulically operated implements and internal uses. You have the choice of up to two rear joystick-operated SCVs or 1 rear and 2 mid-mount, joystick-operated SCVs.

The adjustable rate-of-drop enables precise control of your implement: from the lock position for transporting to varying levels of drop resistance adaptable to your load.



Easy operation

Control of the front loader is easy thanks to strategic placement of the multifunctional joystick

Front loader

The 5E Series has been conceived to withstand heavy front axle usage, ideal for the addition of an optional front loader. Other advantages for front loader work are the small turning radius of this compact tractor, two extra hydraulic pumps at the front, inline shifting for fast backwards/forwards manoeuvring and an almost unobstructed view in all directions.

Order the all-inclusive front loader package with your 5E tractor or retrofit it later. In either case, you can look forward to your choice of NSL or MSL control with the multi-functional joystick.

Recommended attachments include forks, shovels, spears, grapples and hoodguard.



Forward-thinking!

All 5E models are compatible with John Deere front loaders

Specifications

MODEL	5055E, 5065E, 5075E
ENGINE	
Manufacturer	John Deere
No of. Cylinders /aspiration	
T=Turbo, C= Intercooler	3/TC
Displacement (cm ³)	2900
Valves per cylinder	2
Fuel tank capacity (l)	68
Biofuel capabilities	Yes, JD-Additive
Cooling method	Water
Emissions level	Stage 3A
Service intervals (hours)	250
PERFORMANCE	
Rated Power (97/68 EC), kW (hp)	40.5 (55) / 48 (65) / 55 (75)
Rated Power (ECE-R24)	38.1 (52) / 46.1 (63) / 53.8 (73)
Rated Speed (rpm)	2400
Max. torque (Nm)	213 / 247 / 276
Max. torque (Nm) @ engine speed (rpm)	213 / 247 / 276 @ 1800
Torque reverse in %	26 / 23.5 / 20
TRANSMISSION	
Std. transmission	9F / 3R TSS
Clutch	Dry Dual Clutch
Max. transport speed (km/h)	26.3 / 27.6 / 29
Brakes type	Hydrostatic Wet Disc
Differential lock	Mechanical
PTO	
Clutch	Yes
Standard	540 & 540E
HYDRAULICS	
System type	Open Centre
SCV control	Lever / Joystick

MODEL	5055E, 5065E, 5075E
Pump rated output	
steering (l/min)	25
standard (l/min)	46
Total (l/min)	
	71
Hydraulic pressure (bar)	195
Hitch lift capacity max. 610 behind.	1440
Hitch lift capacity max., kgs	1800 at balls
Sensing type	mechanical
SCV	
SCV rear	1/2
SCV mid	2
OPERATOR STATION	
Oos model availability (i = isolated)	IOOS
Roll over protective structure OOS	Yes
Platform – Flat/Straddle	Straddle
Gearshift location	RH / LH – Side Shift
dB(A) rating OOS	86
Seat suspension system	Spring loaded
Worklight	
rear	Standard
Beacon light	Standard
Rear wheel weights	Optional
One-piece hood	Yes
DIMENSIONS & WEIGHTS	
2WD availability	Yes
4WD availability	Yes
2WD	
Wheelbase (mm)	2050
Front tread setting (mm)	1447 – 2082
Rear tread setting (mm)	1417 – 1821
Turning radius without brakes (m)	3.5
Min. overall width (mm)	1790 – 1810

MODEL	5055E, 5065E, 5075E
Ground clearance (mm)	
	310 / 326 / 400
Total height (mm)	
	2425 – 2460
Total height with folded roll-over frame (mm)	
	1800
Shipping weight (kg)	
	2645
Max. permissible weight (kg)	
	4100
Tyres	
front	6.0x16/7.5x16 Goodyear
rear	14.9x28, 8PR 16.9x28, 8PR 16.9x30, 8PR
4WD	
Wheelbase (mm)	
	2050
Front tread setting (mm)	
	1367 – 1932
Rear tread setting (mm)	
	1417 – 1821
Turning radius without brakes (m)	
	3.94
Min. overall width (mm)	
	1790 – 1810
Ground clearance (mm)	
	310 / 326 / 400
Total height (mm)	
	2425 – 2460
Total height with folded roll-over frame (mm)	
	1800
Shipping weight (kg)	
	2745
Max. permissible weight (kg)	
	4200
Tyres	
front	6.0x16 Goodyear (5055E 2WD) 280/85 R20 (11.2 R20) BKT (5055E 4WD) 320/85 R20 (12.4 R20) BKT (5065E 4WD) 320/85 R24 (12.4 R24) BKT (5075E 4WD)
rear	14.9 R28 Goodyear (5055E 2WD) 340/85 R28 (13.6 R28) BKT (5055E 4WD) 380/85 R28 (14.9 R28) BKT (5065E 4WD) 420/85 R30 (16.9 R28) BKT (5075E 4WD)

JohnDeere.com



“Take the credit for buying the best”

John Deere Credit – A range of finance options as powerful as our products. Contact your John Deere dealer for a comprehensive range of finance options to suit the specific needs of your business. Not available in all countries please consult your local dealer.

This literature has been compiled for worldwide circulation. While general information, pictures and descriptions are provided, some illustrations and text may include finance, credit, insurance, product options and accessories not available in all regions. Please contact your local dealer for details. John Deere reserves the right to change specification and design of products described in this literature without notice.