

6M SERIES TRACTORS



81 to 143 kW
(110 to 195 hp) (97/68 EC)



FOR EVERYTHING YOU DO

Since their introduction in 2012, our 6M Series tractors have earned the enviable reputation as definitive all-rounders. Building on that success, we're enhancing the 6M Series with more features, even more power density and Stage IV compliance. Add all this to the quality, strength and reliability that the name John Deere stands for, and you have a tractor that brings you all the versatile capabilities you need.

Whether you're an arable or livestock farmer, speciality producer or a contractor, a 6M tractor will quickly prove its worth to your operations. That's because it has been developed and built by people with a profound understanding of the challenges and opportunities that confront you and your operations every working day. For livestock farming, for instance, the uncomplicated 6M tractor requires little routine maintenance, leaving you more time to concentrate on your animals.

The new enhancements also make the 6M Series an attractive alternative to some more complex and more expensive competitors.





Contents

- Introduction 2
- Versatility & Target groups 4
- Quality 6
- Overview 8
- Cab & Controls 10
- Ride Comfort 12
- Engine 14
- Transmissions 16
- Hydraulics 18
- Hitches & PTOs 20
- R Series front loaders 22
- AMS 26
- MyJohnDeere & JDLink | Maintenance 28
- Attachments 30
- Specifications 32



Livestock farm, Ávila (Spain)



Livestock farm, Bern (Switzerland)

Livestock farming

Nothing is more important than the welfare of your livestock, so your ideal tractor is one that carries out all necessary tasks without missing a beat. A tractor that, when it's not busy mowing, tedding, spraying or spreading, can be deployed for all manner of front loader tasks, including feeding, cleaning out stalls, loading and unloading trailers. That's your 6M Series – a true all-rounder, all year round.



Mixed farm, Plymouth (UK)

Mixed farming

For a versatile 6M Series tractor, mastering the multiple challenges of both arable and livestock farming is, quite simply, all in a day's work. Every day, through every season, year after year.

At home in every field, farmyard, orchard, country lane ...

1

2

4

1

1

2



Our new 6M Series tractors have been designed and engineered to excel wherever they are put to work. They are equally at home in the field carrying out light or heavy tillage, crop care and grassland work with the PTO, speciality agriculture or loader work in your farmyard. Not to mention fulfilling on-road transport tasks with ease.

The new enhancements make the 6M Series even more powerful, versatile, easy to operate and maintain, all of which increases their appeal to contractors, too.



Arable farm, Łódź (Poland)

3

Arable farming

Benchmark power efficiency makes the 6M Series tractor your reliable and strong in-field workhorse. It has the power and capacity you need to carry out all your ploughing, seeding, cultivating and harvesting tasks. Our 6175M and 6195M tractors make light work of even the heaviest tasks.



Arable farm, Arc-lès-Gray (France)

4

Speciality crops

Versatility is built into every 6M tractor but the extreme manoeuvrability of the short wheelbase models makes the 6110M, 6120M and 6130M models particularly suitable for crop care, orchard work and speciality crops.



Contractor business, Potsdam (Germany)

5

Contractor operations

As an accomplished all-rounder, a 6M Series tractor is ideal for many contractor applications. In addition to the capabilities already listed on this page, the 6M can be equipped with John Deere fleet management solutions, so you'll always know where it is, what it's doing and how well it's performing.



What's more, 6M tractors are built at our facility in Mannheim, Germany, where we constantly review our procedures and practices to reduce complexity, improve effectiveness and optimise efficiency. And by implementing six sigma quality guidance principles, best practices and common tools and processes, we can focus on maximising quality in a systematic and cost effective way.

We also talk and listen to you, our customers. Your opinions and feedback, combined with our innovative engineering initiatives, help us develop the machinery and equipment that work hard to improve the success of your operations.

Customer focus group

We keep our finger on the pulse of the market by involving customers in the product development process right from the beginning. Long before a new tractor is launched, the prototype will already have been evaluated by a representative group of customers. We see great value in the input of these agricultural professionals.



ASSURED RELIABILITY.
 MINIMAL MAINTENANCE.
 THAT'S JOHN DEERE QUALITY

All John Deere agricultural machinery is built to the highest possible standards. Our 6M Series is a prime example of this philosophy, which is why all major components – engines, transmissions and full frame chassis – are designed, engineered, manufactured and tested by John Deere. And they are all designed to work perfectly together.



Customer satisfaction index

Six months after taking delivery of your tractor, you will receive a questionnaire that enables you to tell us about your experience with our product. At John Deere, this has been standard practice for years and the resulting data has contributed to new product development and the quality of our sales, service and manufacturing processes.



Relentless research

Our reputation as the manufacturer of reliable agricultural machinery is put to the test every day. So, before our tractors reach the marketplace, the John Deere Development Engineering Group subjects them to two years of intensive testing.



Serious testing

Wind tunnels, cold rooms, bump tracks, tilt platforms, electrical magnetic interference tests and mud baths recreate the most extreme of all agricultural conditions. Because we know, in the real world, you need tractors that simply won't let you down.

Loader ready

Front loader ready package ex-factory
New R Series front loaders
New electronic joystick

Integrated solutions

AutoTrac & ISOBUS for all models

6195M

New 6M flagship

Comfort

TLS front axle suspension
Mechanical cab suspension

Durability

PermaClutch 2

1

2

3

4

5

Capability without complexity

The established strengths and capabilities of the 6M Series have written their own success story. The next chapter starts here, with increased power density, Stage IV emission compliance, more comfort and convenience. Our new “top of the line” model is the 6195M with rated power of 195 hp (97/68 EC).

This new 6M is, of course, built upon John Deere’s renowned full frame design, providing the highest structural integrity and lower vibration levels. The hydraulic system has been upgraded to provide the higher lift capacity required for bigger and heavier implements. Good news for your productivity.

EIGHT MODELS, THREE WHEELBASES



2580

Compact, light and agile

6110M, 6120M, 6130M



2765

Versatile, efficient and powerful

6135M, 6145M, 6155M



2800

Heavy-duty workhorse

6175M, 6195M



Superb hydraulics

Pressure Flow
Compensated
hydraulic system
Up to 4 rear SCVs
Integrated economy
front hitch

Strong backbone

Unique full steel
frame chassis

New engine

Unique serial turbo
DPF + DEF

New front axle

Improved steering
More traction

Widest transmission portfolio

PowrQuad Plus
Semi-automatic AutoQuad Plus
Semi-automatic AutoQuad Plus EcoShift
New CommandQuad Plus
New CommandQuad Plus EcoShift

6

7

8

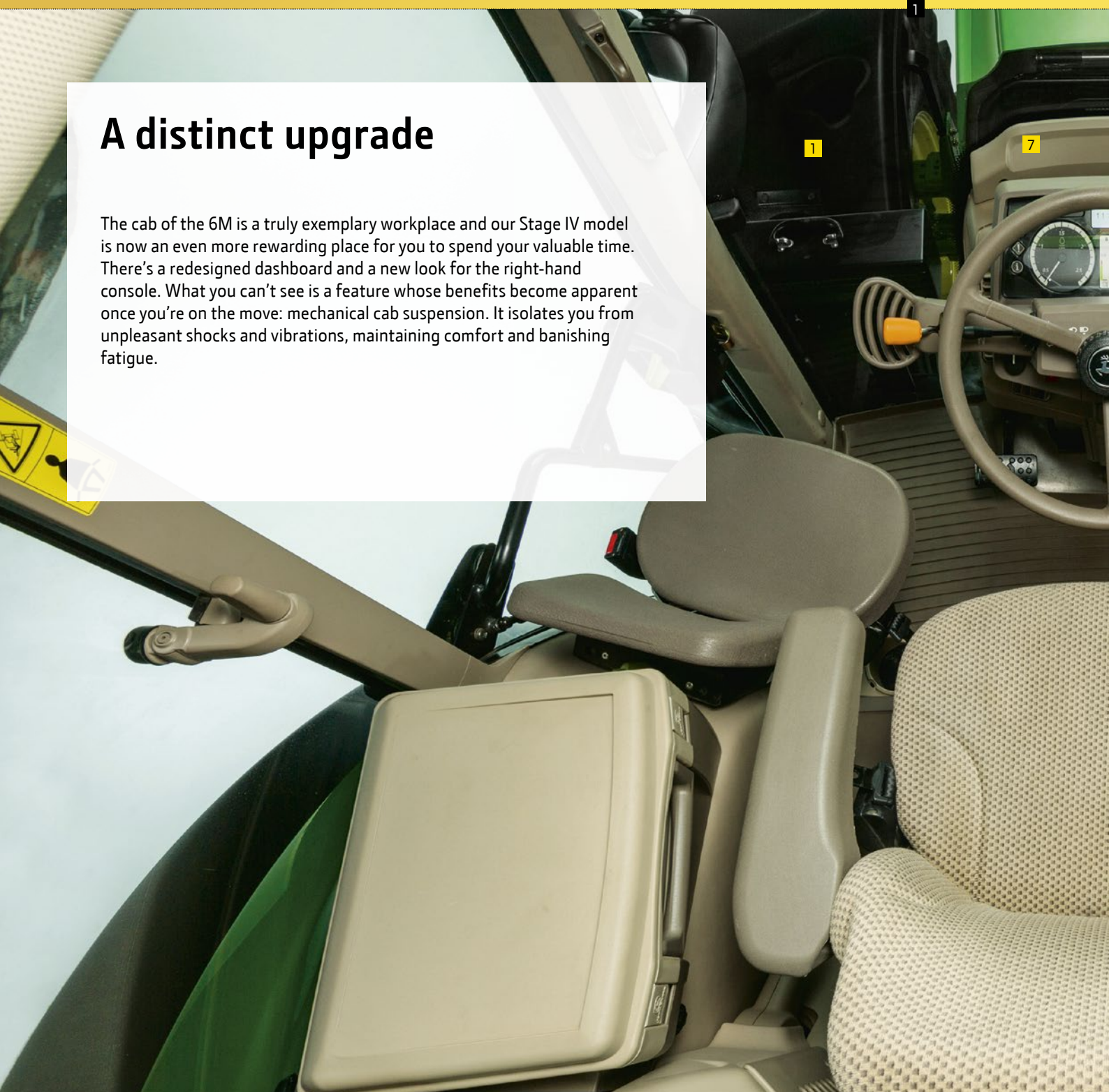
9

10



A distinct upgrade

The cab of the 6M is a truly exemplary workplace and our Stage IV model is now an even more rewarding place for you to spend your valuable time. There's a redesigned dashboard and a new look for the right-hand console. What you can't see is a feature whose benefits become apparent once you're on the move: mechanical cab suspension. It isolates you from unpleasant shocks and vibrations, maintaining comfort and banishing fatigue.



Redesigned dashboard

The redesigned dashboard with clear graphics and touch-sensitive controls has been optimised to provide a coherent overview of all major systems.

New look right-hand console

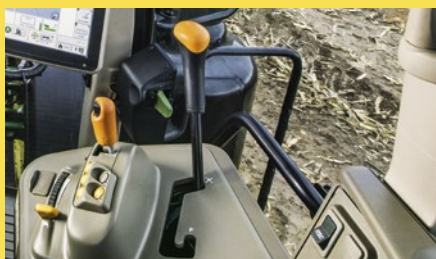
Multiple seat options

Electrical mid-stack valves

Optional CommandQuad Plus transmission

Optional GreenStar display

Redesigned dashboard



New CommandQuad Plus

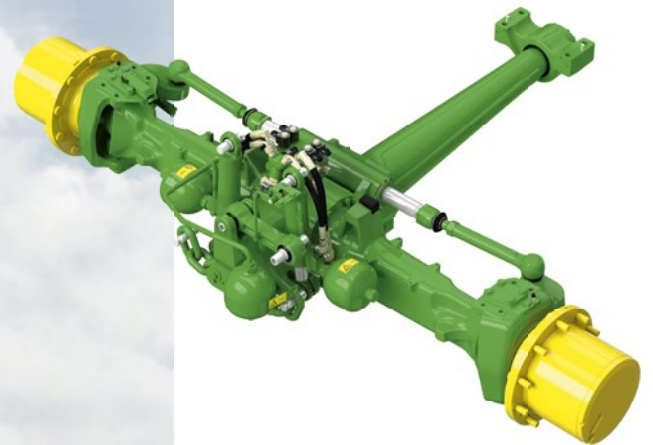
The convenience of clutchless automatic shifting.

COMFORT IS NOT A LUXURY

A comfortable operator is a safer, more alert and more productive operator. The John Deere full frame design provides a rigid platform that absorbs and resists loads and shocks transmitted via the wheels, heavy implements or front loader. To minimise the fatigue and stress caused by unpleasant vibrations, 6M tractors can be specified with optional mechanical cab suspension.

The newly designed front axle delivers improved on-road handling characteristics and its redesigned geometry reduces the amount of steering effort required. There's also the option of Triple Link Suspension (TLS). The cab of the 6M is an extremely pleasant and efficient place to work.





Triple Link Suspension (TLS)

This delivers optimum traction and in-field performance by putting up to 7% more power to the ground than a rigid axle. It automatically adjusts in response to changing load and draft conditions. TLS makes the going easier and more productive.

- Self-levelling, with +50 mm suspension travel
- Automatic adjustment of axle sensitivity and suspension rate
- Long draft member for optimised draft performance
- Synchronisation with hitch sensing system to compensate power hop effect under heavy pull conditions
- Additional brake discs in front axle hubs provide increased braking capacity



Cab suspension (mechanical)

Keeping the operator relaxed and protected from irritating vibrations is achieved with our maintenance-free mechanical cab suspension.

POWER UP. EMISSIONS DOWN

Stage IV compliance the John Deere way

All John Deere engines are designed and engineered specifically for agricultural applications. The new 6M Series tractors are powered by our renowned 6.8 l and 4.5 l PowerTech engines, which have been revised to generate all the power you could need, while consuming less fuel and meeting the demanding Stage IV emissions standards. The proven diesel particulate filter allows the engine to respond quickly to changing loads. The engines are equipped with a new SCR system using DEF that has been developed by John Deere especially for our engines.



Proven technology

John Deere pioneered the use of 4-valve High Pressure Common Rail (HPCR) engines in agricultural machinery over 10 years ago. Today, the high power output of our engines is achieved by this refined HPCR technology with an injection pressure of up to 2500 bar.

Our PVX engines in the 6155M and 6175M models are equipped with a Variable Geometry Turbocharger (VGT) whose vanes adjust automatically to maintain consistent exhaust velocity and back pressure across the torque curve. This boosts both performance and fuel efficiency. The oil change interval for these 6-cylinder engines is 750 hours.

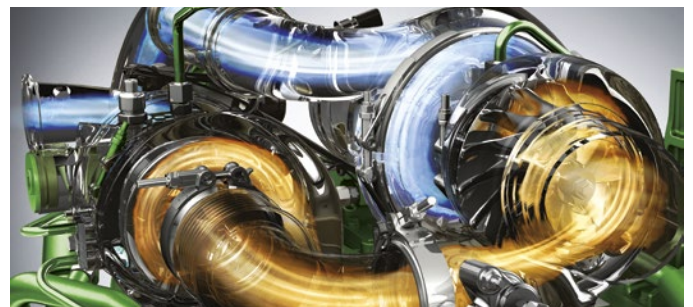
PSS engines (6110M, 6120M, 6130M, 6135M, 6145M and 6195M) use a 2-stage turbocharging system in which the VGT multiplies the pressure created by a fixed vane turbocharger. This sequential arrangement boosts power and helps reduce emissions.





Green and clean

Stage IV compliance is achieved by first passing exhaust gases through a combined Diesel Oxidation Catalyst (DOC) and Diesel Particle Filter (DPF), then through a Selective Catalytic Reduction (SCR) process to neutralise harmful nitrogen oxides. The super-efficient cooling system keeps the engine running at optimum operating temperatures.



Variable Geometry Turbocharger (VGT)

The VGT generates a mass of combustion air for constant high torque across the wide power band. This ensures impressive power density, even at lower rpm, thus saving fuel.

EASY OPERATION WITH STRAIGHTFORWARD TECHNOLOGY

There's a versatile 6M tractor for everything you want to do. And to underline that all-round capability, there's now a choice of five available transmissions.



PowerQuad Plus, AutoQuad Plus and AutoQuad Plus EcoShift are joined by CommandQuad Plus and CommandQuad Plus EcoShift. Both new transmissions deliver enhanced clutchless automatic shifting for more operator convenience and higher productivity.

For speciality applications a creeper transmission is available for 6110M, 6120M, 6130M, 6135M, 6145M and 6155M versions.

Like all 6M core components, our transmissions are engineered in-house using highly efficient and reliable mechanical systems, making them especially easy even for inexperienced operators to master.



PowerQuad Plus

Three versions are available: 16/16, 20/20 and 24/24. All provide rapid shifting including speed matching when shifting between ranges. They are operated by a single range lever with declutch function and push-button gear selection. SoftShift technology keeps the changes smooth, even under load.



AutoQuad Plus and AutoQuad Plus EcoShift

All the benefits of PowrQuad Plus with the added convenience of automatic gear shifting. 20/20 and 24/24 versions are available. The EcoShift option delivers a higher transport speed (40 km/h) between only 1580 and 1680 rpm, reducing fuel consumption and emissions by up to 23%.



CommandQuad Plus and CommanQuad Plus EcoShift

For enhanced convenience and productivity CommandQuad Plus adds even more automatic capability. The smoothness of its autoclutch function – there's no need to press the clutch when stopping – and the performance of the powerfill brakes make 6M tractors perfect for loader work and when hooking up implements. Choose between 20 forward/20 reverse speeds or 24 forward/24 reverse speeds. The intuitive single control lever enables both manual and automatic speed selection and is complemented by the left-hand reverser. The EcoShift version with a transport speed of 40 km/h operates at engine speeds of only 1600 rpm.

MUSCLE POWER ON TAP

Outstanding versatility requires an outstanding hydraulics system. Stage IV 6M tractors are equipped with the same rear hitch geometry as our premium 6R Series and can be specified with the same high lift capacity. The Pressure and Flow Compensated system (PFC) is capable of producing a maximum flow of 114 l/min whenever the system loading requires it. When the flow is no longer needed, the system returns to the “no flow” stand-by mode. Not only does this improve both fuel efficiency and implement performance, it also enhances steering response.





A simpler designed Pressure Compensated system (PC) with 80 l/min is also available for owners with tasks that are less arduous.

6M Series hydraulic systems power up to 4 Selective Control Valves (SCV) to operate rear-mounted implements as well as the integrated front hitch. Mechanically activated valves (M-ICV) and electronically activated valves (E-ICV) enable easy joystick control of John Deere front loaders.



iTEC Basic headland management system

Intelligent Total Equipment Control Basic helps the operator co-ordinate the control of implements when executing headland turns.



SCV stack

Easily accessed between the rear hitch rails, the SCV stack groups together up to 4 SCVs, Power Beyond couplers and the Pressure-Free Return circuit valve for convenient operation.

WHATEVER YOU'RE TAKING ON, YOUR 6M IS READY



The acknowledged versatility of the 6M Series is complemented by our hitches, drawbars and PTOs and enhanced by the convenience of ISOBUS connectivity with a wide range of productive implements. The new rear hitch is identical with that on our premium 6R tractors and delivers the same maximum lift capacity of 8500 kg. Available PTO speed options are 540/1000 rpm or 540/540E/1000 rpm.

Versatility can be extended with the integrated front hitch that is perfect for carrying ballast and front implement operation. It can also be combined with the integrated John Deere front PTO, which is fully compatible with John Deere front loaders. Our three-point hitches feature sway stabilizers and hitch damping for enhanced ride stability and iTEC Basic Headland Management System for co-ordinated implement control.

Whether you're working with hitches, drawbar or PTO, you can be assured that all of these John Deere components are engineered for durability and ease of operation. Good news for the efficiency and productivity of your operations.



Rear hitch

The sturdy rear hitch, with a maximum lift capacity of up to 8500 kg* can easily handle the heaviest of implements.



Integrated front hitch (with PTO)

Make the most of the hydraulic power generated by your 6M tractor with the fully integrated front hitch. It provides up to 4000 kg* maximum lift capacity and is also available as a field installation kit from your dealer. The John Deere front hitch includes the following features:

- Front SCV coupler
- Double-acting cylinders for both lift and down pressure
- Full compatibility with John Deere front loaders

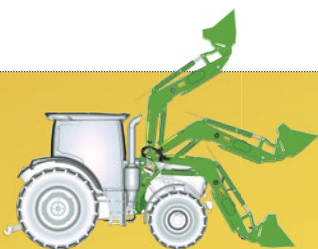
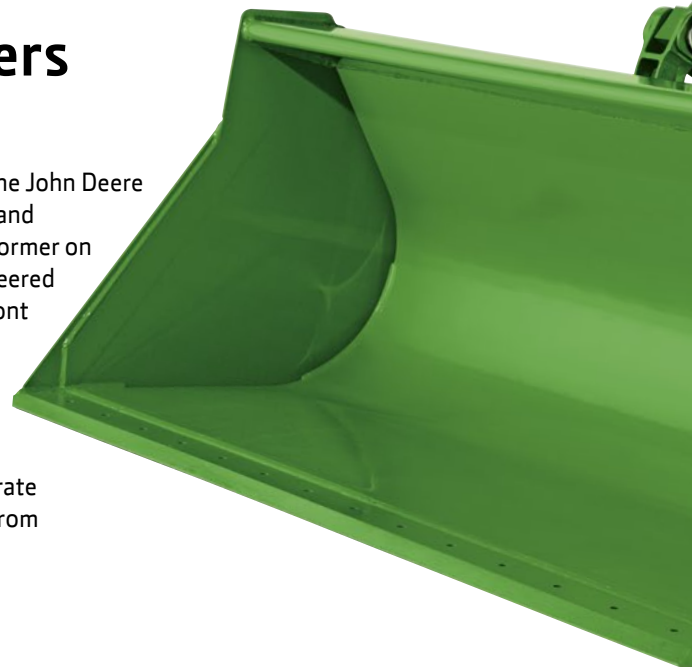
*maximum lift capacity at hooks



Raising the game: John Deere R Series front loaders

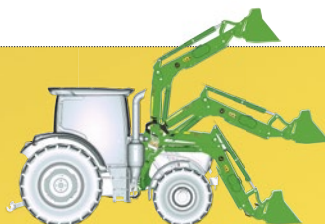
A 6M tractor is the perfect platform for heavy front loader work, thanks to the John Deere full frame design. The sturdy double backbone construction resists stresses and twisting forces caused by uneven loading, making the 6M a most stable performer on and off the farm. The durable, oil-cooled PermaClutch 2 in every 6M is engineered to manage the multiple directional changes that are typical of continuous front loader operations.

John Deere front loaders are designed, manufactured and tested to the same stringent standards as our tractors. They fit the 6M tractor perfectly, are compatible with the John Deere front hitch, work with reliable precision and durability and allow superb all-round visibility for accurate positioning. A close-fitting hood guard is available to protect the front end from the possibility of damage during loader operation.



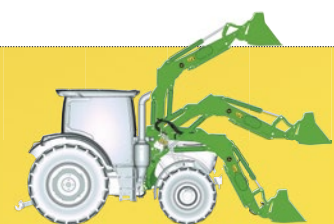
Non Self-Levelling (NSL)

Ideal for working with grain and similar bulk matter.



Mechanical Self-Levelling (MSL)

Capable of dealing with all kinds of heavy work. Levelling is maintained automatically.



Hydraulic Self-Levelling (HSL)

Perfect for handling manure, silage, bulk materials, pallets and any other heavy-duty applications. Levelling is maintained automatically.



Built for a long working life

Loads generated by operating a front loader are transferred to the middle of the rugged full frame by cast iron mounting frames for optimum weight distribution whether loaded or empty. The mounting frame design and loader kinematics are optimised to bear the heaviest of loads with ease, without obstructing access to tractor maintenance points or the front wheel steering angle. The front axle is constructed from three sturdy components, resulting in faster, easier turns, higher payload capability and very high resistance to severe stresses. Pivot points benefit from an eccentric design while the new bushings are made to manage heavy, directional loads and are easily replaceable. The high quality of John Deere front loaders is reflected in their long guarantees and infrequent service intervals.



1

Underslung levelling link

The ingenious geometry of our front loader linkage brings several practical advantages. Because the levelling link is underslung it cannot impair the operator's view. It also conveys more power along the loader shafts, provides easy access for servicing and allows greater steering angles.



2

Automatic mast latch

Mounting our front loaders could not be quicker, safer or more convenient thanks to the built-in automatic mast latch. You need to leave the cab only once. Separating tractor and loader is just as easy.



3

Automatic implement latch

Whether you're working with buckets, forks, grapples or bale spikes, our auto latch system allows you to automatically lock any implement. Locking is faster because complete rollback is not necessary. Unlocking is easy too, with the conveniently located release handle.

BOOSTING PRODUCTIVITY AND EASE OF OPERATION



There's a range of optional solutions that help you access all the built-in benefits of your John Deere front loader. They save valuable time, boost convenience and reduce operator fatigue.



Hydraulic implement unlatching

A cab-mounted switch allows the operator to unlatch an implement without leaving the cab. Manual unlatching can still be carried out if required. It's a straightforward system, utilising a gas accumulator/oil pressure combination to lock and unlock.



Loader lights

Purpose-built John Deere loader lights provide the consistent and reliable illumination you need when working with a front loader in darkness or poor visibility. Being loader-mounted, the lamps follow every movement of the loader, fit perfectly and also offer exceptional value.



**Combi Euro/MX
Carrier**



**Combi Euro/SMS
Carrier**

Carrier choices

John Deere offers a unique combi-system which handles both Euro standard and alternative coupling standards within one carrier. The **Standard Euro Carrier**, delivered with your John Deere front loader ex-factory, fits all Euro implements that you may already have.

The **Combi Euro /SMS Carrier** works equally well with Euro and SMS implements. For ultimate convenience, our **Combi Euro/MX Carrier** is all that's required to work in the Euro or MX configuration. Re-configuration can be achieved manually but without tools within one minute.

TRACTOR/LOADER COMPATIBILITY

There's a choice of two front loader sizes for each 6M model. Whether the loader is electronically or mechanically controlled, it is operated by a dedicated valve. All loaders can be retro-fitted.

	623R (NSL, MSL, HSL)	643R (NSL, MSL, HSL)	663R (NSL, MSL)	683R (MSL)
6110M, 6120M, 6130M	●	●		
6135M, 6145M, 6155M		●	●	
6175M, 6195M			●	●



Loader suspension

The smooth operation of your John Deere tractor can be enhanced with our front loader suspension unit. Its effective damping protects the material you are handling as well as your tractor and improves operator comfort on the road. It can be activated/deactivated from within the cab by a button, such as that on the joystick.

MemoSystem

The optional MemoSystem enables the implement to return automatically to a memorised angle. For example, when carrying out repetitive work such as loading a trailer, the procedure typically follows the same loading cycle. The MemoSystem maintains the operator's previous actions when loading the next charge into the bucket. Thanks to the system's retention of the implement's angle there is no further need to adjust the positions.

Mechanical Loader Control Valve (M-LCV)

M-LCV provides convenient, single-lever, joystick-control. Depending on tractor model, additional joystick functions include GSS, diverter valves, MemoSystem and loader suspension. See table for compatibility.

Electronic joystick

Easily the most comfortable way to operate a front loader, the electronic joystick manages up to 5 functions independently and is mounted on the redesigned right-hand console. The suspension button is located just below the grip.



ON TRACK FOR HIGHER PRODUCTIVITY

Precision farming starts with guidance. It points the way to measurable reductions in the volumes of seed, fertilizer and chemicals required, by positioning your machines with reliable accuracy. And the enhanced productivity and operator comfort are matched by lower fuel consumption.

Automatically record all your field applications on your GreenStar 3 2630 Display: From tillage to seeding, spraying and fertilizer spreading, you can document precisely the details of each operation. Then you can transfer the data to our web portal – MyJohnDeere.com (see page 28).



StarFire 3000 receiver

Complete with an integrated Terrain Compensation Module (TCM) as well as GPS and GLONASS satellite compatibility. Entry-level accuracy SF1 is provided by John Deere at absolutely no cost to you. The receiver works seamlessly with all levels of signal accuracy and all John Deere guidance systems. Capabilities include enhanced signal sensitivity, easy activation and faster satellite acquisition. Improved satellite availability, with signals from 56 GPS and GLONASS satellites across the globe, keeps you on track even in difficult areas such as near treelines. Satellites that are just 5° above the horizon can be acquired.

The signals provide three levels of accuracy:

- ± 23 cm pass-to-pass accuracy with the FREE SF1 signal, perfect for tillage, the ideal entry-level solution
- ± 5 cm pass-to-pass accuracy with the SF2 signal, ideal for mowing, seeding and spraying.
- For the highest precision, choose the RTK signal for ± 2.5 cm repeatable accuracy

SF1		± 23 cm
SF2		± 5 cm
RTK		± 2.5 cm



GreenStar displays

Our displays are designed to provide operators with effortless fingertip control and visual guidance for more accurate steering. They optimise the performance of both man and machine, improving productivity and minimising unnecessary fuel consumption. All are ISOBUS enabled. The GreenStar 2 1800 display is the perfect entry-level guidance and ISOBUS implement control. It has a scroll wheel for easy navigation and ten mapped letter keys for quick, one-touch operation. Installation is very straightforward: the set-up wizard ensures that you'll have the display up and running after following a few simple steps. For more precision, it can be upgraded to run automatic guidance and section control for John Deere implements.

The full-colour GreenStar 3 2630 display provides full monitoring and control over all the Agricultural Management Solutions you use in your 6M Series tractor. The display also supports advanced telematics solutions such as John Deere Remote Control Display Access and John Deere Wireless Data Transfer. The brilliant 26 cm touch-screen comes with advanced ISOBUS functionality and sets new standards for convenience, clarity and efficiency, is easy to understand and use, robust and there are all the features and power you'll ever need, year after year.

AutoTrac automatic guidance

All 6M Series tractors can be specified with AutoTrac, our integrated automatic guidance system. Complete with all the advantages that automatic guidance can offer, the integrated AutoTrac system is destined to raise your productivity by reducing input costs and boosting efficiency. AutoTrac masters both straight and curved tracks and works without problems even in low visibility situations, reducing skips and overlaps, saving fertilizer, seed and fuel. You could save up to 8% on your input costs*.

*Source: "Lohnunternehmen", 01/2010

TELEMATICS: OPTIMISING YOUR OPERATIONS

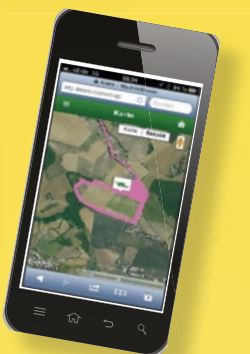
Our agricultural web portal MyJohnDeere.com unlocks the full potential of your operations. You can monitor and run your fleet of machines, stay up to date with weather forecasts for more efficient job planning and manage your land, allocate your equipment, track the work progress of your machines and view what has been achieved over the day. All from a central location and with all data in one place. With John Deere Wireless Data Transfer you can even send data “over the air” between MyJohnDeere.com and the GreenStar 3 2630 display, eliminating the risk of data loss, and saving time on data transfer. You can log on to MyJohnDeere.com from any PC or mobile device for an immediate overview of your on-going operations and share data securely with your dealer, other business partners, trusted advisors or customers.



Intelligent fleet management and control

MyJohnDeere.com opens up the smartest new way to plan, run and manage all your operations. Intuitive operation makes navigation very easy, with all relevant operational information clearly displayed on the map. It maintains an invaluable connection between you, your machines and your land and is your portal for accessing machine performance and health monitoring data via JDLink.

Getting connected could not be easier. You can create your account at no cost whatsoever, then simply log on to new levels of efficiency and productivity.



BUY YOUR UP-TIME SOLUTION: POWERGARD

Maintenance and repair plans

In today's farming environment machine efficiency and predictable costs are the key to running a successful farming business.

Now you can purchase John Deere equipment with more confidence than ever. John Deere PowerGard is a straight forward solution to your equipment servicing and repair work designed to help you budget your operating cost.

With flexible coverage options PowerGard is the tailored aftermarket solution to keep your machine running at peak performance and control your operating costs.

PowerGard Maintenance Plan

– Ensures your machine's reliability

PowerGard Protection Plan

– Your entrance to comprehensive machine protection

PowerGard Protection Plus Plan

– Ultimate financial peace of mind for your investment

Your benefits

– Maximum Uptime. Security.



COMPONENTS COVERED*		POWERGARD PROTECTION	POWERGARD PROTECTION PLUS
Engine	Basic Engine	✓	✓
Engine Auxiliaries	Intake & Exhaust System		✓
	Engine Electrical Parts		✓
	Engine Cooling System		✓
	Fuel Supply System		✓
	Electrical Systems		✓
Power Train	Transmission, Differential, PTO, Axles and Final Drives	✓	✓
	Transmission Oil Coolers		✓
Steering and Brakes	Wet Brake Components	✓	✓
	Brake Systems		✓
	Steering	✓	✓
	Steering Cylinders		✓
Hydraulics	Hydraulic System		✓
Frame, Members, Miscellaneous	Frame	✓	✓
	Non-driven Axles Hubs & Bearings	✓	✓
Operator's Station	Monitors		✓
	Operator Controls		✓
	Operator Station (Cab, Platform)		✓

*Covered components may vary according to machine options.

ADDING VALUE

We're all individuals and we all have our personal preferences and priorities. So we've made it easy to put your own personal stamp on your tractor. Configuring your 6M to fit the needs of your business with genuine John Deere attachments will increase convenience and productivity – and make a great machine even better.

All genuine John Deere attachments are manufactured to the same demanding standards as all of our original equipment, so longevity and a perfect fit are guaranteed.



Seat covers

John Deere seats are both hardwearing and comfortable but our made-to-measure seat-covers in high quality leatherette or reinforced cloth help preserve that showroom finish.



Floor mats

Reduce noise levels and protect the cab floor with our high quality floor mat. Customised to fit the 6M cab perfectly.



Monitor brackets

Purpose- designed for the cab of your 6M, our monitor brackets are the perfect solution for mounting smartphones or tablets in the most ideal locations.



Add more Do More

Ballast solutions

Intelligent ballasting optimises tractor performance by bringing more power to the ground, reducing fuel consumption and improving traction and ride comfort.



Sunshades

Keep the sun out of your eyes. Available for the front and rear window.



Internal and external rear view mirrors

Visibility enhancements to ensure the best view at all times no matter what the job or weather conditions.



Choice of hitches

Extend tractor versatility with hitches that provide multiple application solutions. There are vertical and horizontal inserts that optimize pulling abilities and forced steering systems for left-hand, right-hand and both sides.

Specifications

Model	6110M	6120M	6130M	6135M	6145M	6155M	6175M	6195M
ENGINE PERFORMANCE								
Rated power (97/68EC), hp (kW)	110 (81)	120 (88)	130 (96)	135 (99)	145 (107)	155 (114)	175 (129)	195 (143)
Max. power (97/68EC) hp (kW)	116 (85)	126 (93)	137 (101)	142 (105)	153 (113)	164 (120)	185 (136)	206 (151)
Rated power (ECE-R24) hp (kW)	105 (77)	114 (84)	120 (90)	129 (95)	139 (102)	150 (110)	167 (123)	188 (138)
Max. power (ECE-R24), hp (kW)	111 (82)	122 (90)	131 (96)	137 (101)	148 (109)	159 (117)	178 (131)	200 (147)
Constant power range, rpm	2100-1600							
Torque reserve, % percentage	35%							
Maximum torque, Nm (at 1500 engine rpm)	497	542	587	610	655	700	790	880
Rated speed, rpm	2100							
Manufacturer	John Deere Power System							
Type	PowerTech PSS					PowerTech PVS		PowerTech PSS
Aftertreatment	Lifetime Diesel Particulate Filter (DPF), Diesel Oxidation Catalyst (DOC) and Selective Catalytic Reduction (SCR) using DEF							
Engine air filter	PowerCore® G2 air filter with pre-cleaning							
Aspiration	Dual turbochargers, variable geometry turbo with fixed geometry turbo in series					Variable geometry turbocharger		Dual turbochargers, variable geometry turbo with fixed geometry turbo in series
Cylinders / Displacement	4/4.5l					6/6.8l		
Cooling system	Distributed cooling system with temperature controlled viscous fan drive							
Fuel injection system & control	High pressure common rail system with up to 2000bar injection pressure, electronically controlled					High pressure common rail system with up to 2500bar injection pressure, electronically controlled		
TRANSMISSIONS								
PowrQuad Plus								
16/16 2.4 - 30 km/h	•	•	•	•	•			
16/16 3.2 - 38 km/h	•	•	•					
20/20 2.5 - 40 km/h						•	•	•
24/24 1.4 - 40 km/h	•	•	•	•	•			
AutoQuad Plus								
20/20 2.5 - 40 km/h						•	•	•
24/24 1.4 - 40 km/h	•	•	•	•	•			
AutoQuad Plus EcoShift								
20/20 2.5 - 40 km/h						•	•	•
24/24 1.4 - 40 km/h	•	•	•	•	•			
CommandQuad Plus								
20/20 2.5 - 40 km/h						•	•	•
24/24 1.4 - 40 km/h	•	•	•	•	•			
CommandQuad Plus EcoShift								
20/20 2.5 - 40 km/h						•	•	•
24/24 1.4 - 40 km/h	•	•	•	•	•			
Creep (PowrQuad Plus, AutoQuad Plus and AutoQuad Plus EcoShift)	•	•	•	•	•	•		
AXLES								
Suspended front axle (option)	Triple Link Suspension (TLS) MFWD Axle, hydro-pneumatic, active, triple link, self-levelling, load adjusting suspension							
Suspension range with TLS Plus	100 mm suspension range							
Engagement front differential lock	Self-locking differential							
Engagement rear differential lock	Electro-hydraulic with oil cooled clutch							
Rear axle	Flange axle							
STEERING								
Type	Dynamic load sensing, hydrostatic, flow metering							
HYDRAULIC SYSTEM								
Type	Pressure Compensated (PC) / Pressure & Flow Compensated (PFC) system with load sensing function					Pressure & Flow Compensated (PFC) system with load sensing function		
Flow at rated engine speed base/option, l/min	80 / 114					114		
Selective control valves	Up to 4+3							
Power beyond	Optional							
Oil take out capacity with overfill, l	25					35		
Oil take out capacity with additional oil reservoir, l	37					47		

Model	6110M	6120M	6130M	6135M	6145M	6155M	6175M	6195M
3-POINT HITCH - Rear								
Type	Electronic lower link sensing; load & depth control, infinite mix, float							
Category	II/IIIN		IIIN		IIIN/III		III	
Maximum lift capacity at hooks, kg (base/option)	3950/5300	3950/5300	4600/6000	5300/6800	6000/6800	7200/8100	8500	8500
Lift capacity through full lift range (OECD 610mm), kg (base/option)	2500/3400	2500/3400	2900/3800	3400/4300	3800/4300	3700/4200	4850	4850
Lift capacity through full lift range (OECD 1800mm), kg (base/option)	1550/2100	1550/2100	1800/2350	2100/2650	2350/2650	2800/3200	3400	3400
3-POINT HITCH - Front, optional								
Type	Front hitch controlled by rear SCV							
Category	IIIN							
Maximum lift capacity at hooks, kg	4000							
Lift capacity through full lift range (OECD at the hooks), kg	3300							
REAR PTO								
Electro-hydraulically engaged, oil cooled, multi-disc design								
Engine rpm at rated PTO speeds with 540/1000 option	1967/1962				1987/2000		1950/1950	
Engine rpm at rated PTO speeds with 540/540E/1000 option	1967/1496/1962				1987/1753/2000		1950/1721/1950	
FRONT PTO, optional								
Type	Electro-hydraulically engaged, oil cooled							
Engine speed at rated PTO speed (1000), rpm	1969							
CAB								
Specifications	310° all-round vision, telescoping and tiltable steering column/wheel							
Suspension (option)	Mechanical cab suspension MCS							
Noise level at operator's ear, dB(A)	71							
Cab glass area, m ²	4.79							
Display	Integrated into dashboard							
MISCELLANEOUS								
AutoTrac Ready	Optional							
ISOBUS implement connection	Optional							
Immobiliser	Optional							
Trailer brake systems (options)	Hydraulic and/or pneumatic system							
CAPACITIES								
Fuel Tank, l	195	195	195	265	265	270	325	325
Engine coolant, l	22			27			28	
DIMENSIONS AND WEIGHTS								
Wheelbase, mm	2580			2765			2800	
Width x Height x Length, mm	2490 x 2880 x 4485			2490 x 2930 x 4690	2490 x 2930 x 4730	2490 x 2970 x 4730	2550 x 3100 x 4990	
<i>Measured with flanged axle, up to cab roof, from front weight support to horizontal draft link hooks and with max. front tyres/ max. rear tyre sizes.</i>								
Ground clearance, mm	490			540	530		545	
<i>Measured at centre of front axle, using max. front and max. rear tyre sizes</i>								
Shipping weight, kg	5800			6200		6700	7500	
<i>Measured with average specifications</i>								
Maximum permissible gross weight, kg	8650	9150	9150	9950	10000	11000	12300	12300
TYRE SIZES								
Front tyre sizes, max. available (diameter in cm)	540/65R24 (134)			540/65R28 (144)			600/65 R28 (152)	
Rear tyre sizes, max. available (diameter in cm)	600/65R38 (178)			650/65R38 (185)			710/70 R38 (200)	



The American Society of Agricultural and Biological Engineers is an educational and scientific organisation dedicated to the advancement of engineering applicable to agricultural, food and biological systems. Founded in 1907 and headquartered in St. Joseph, Michigan, ASABE comprises 8,000 members in more than 100 countries.

Specifications

TRACTOR MODEL			6110M/6120M/6130M		6110M/6120M/6130M	
FRONT TYRE			480/70R24		480/70R24	
REAR TYRE			520/70R38		520/70R38	
WHEELBASE		(WB) in / mm	2580		2580	
PUMP CAPACITY		gpm / lpm	114		114	
RATED PRESSURE		psi	2900		2900	
LOADER			623R NSL		623R MSL	
BUCKET			Standard Bucket 1850mm		Standard Bucket 1850mm	
BUCKET WEIGHT		lb / kg	520	236	520	236
LIFT CAPACITY*	MEASURED @ PIVOT	(U) lb / kg	5781	2622	5265	2388
@ FULL HEIGHT	MEASURED @ 800mm AHEAD OF PIVOT	(V) lb / kg	3874	1757	5009	2272
LIFT CAPACITY*	MEASURED @ PIVOT	(W) lb / kg	6016	2729	6023	2732
@ 59 in (1.5m)	MEASURED @ 800mm AHEAD OF PIVOT	(X) lb / kg	4632	2101	5692	2582
BOOM	MEASURED @ PIVOT	(Y) lb / kg	6263	2841	6733	3054
BREAKOUT	MEASURED @ 800mm AHEAD OF PIVOT	(Z) lb / kg	4553	2065	5730	2599
BUCKET	@ MAXIMUM HEIGHT	(VV) lb / kg	4978	2258	5137	2330
ROLLBACK FORCE	@ 59 in (1.5m) LIFT HEIGHT	(XX) lb / kg	9367	4249	9407	4267
	@ GROUND LEVEL	(ZZ) lb / kg	9608	4358	9570	4341
MAXIMUM LIFT HEIGHT*		(A) in / mm	162	4124	162	4124
CLEARANCE*	@ FULL HEIGHT - BUCKET LEVEL	(B) in / mm	152	3854	152	3854
	@ FULL HEIGHT - BUCKET DUMPED	(C) in / mm	122	3088	122	3088
OVERALL LENGTH		(WB+F) in / mm	202	5128	202	5128
DIGGING DEPTH*		(H) in / mm	-4	-91	-4	-91
REACH*	@ MAXIMUM HEIGHT	(D) in / mm	30	759	30	759
	@ GROUND - BUCKET LEVEL	(F) in / mm	100	2548	100	2548
	DUMP ANGLE @ FULL HEIGHT	(E) degrees		-59		-59
BUCKET ANGLES	ROLLBACK @ GROUND	(G) degrees		48		48
	DUMP ANGLE @ GROUND	degrees		-151		-96
	LOADER RAISE	sec		3.43		3.37
CYCLE TIMES	LOADER LOWER	sec		2.57		2.53
	BUCKET DUMP	sec		2.65		1.81
	BUCKET ROLLBACK	sec		1.81		1.81

TRACTOR MODEL			6110M/6120M/6130M		6110M/6120M/6130M	
FRONT TYRE			480/70R24		480/70R24	
REAR TYRE			520/70R38		520/70R38	
WHEELBASE		(WB) in / mm	2580		2580	
PUMP CAPACITY		gpm / lpm	114		114	
RATED PRESSURE		psi	2900		2900	
LOADER			643R NSL		643R MSL	
BUCKET			HEAVY DUTY 2200mm		HEAVY DUTY 2200mm	
BUCKET WEIGHT		lb / kg	683	310	683	310
LIFT CAPACITY*	MEASURED @ PIVOT	(U) lb / kg	5582	2532	5013	2274
@ FULL HEIGHT	MEASURED @ 800mm AHEAD OF PIVOT	(V) lb / kg	3902	1770	5137	2330
LIFT CAPACITY*	MEASURED @ PIVOT	(W) lb / kg	5891	2672	5789	2626
@ 59 in (1.5m)	MEASURED @ 800mm AHEAD OF PIVOT	(X) lb / kg	4614	2093	5465	2479
BOOM	MEASURED @ PIVOT	(Y) lb / kg	6241	2831	6548	2970
BREAKOUT	MEASURED @ 800mm AHEAD OF PIVOT	(Z) lb / kg	4698	2131	5728	2598
BUCKET	@ MAXIMUM HEIGHT	(VV) lb / kg	5247	2380	5512	2500
ROLLBACK FORCE	@ 59 in (1.5m) LIFT HEIGHT	(XX) lb / kg	9328	4231	9566	4339
	@ GROUND LEVEL	(ZZ) lb / kg	9740	4418	9656	4380
MAXIMUM LIFT HEIGHT*		(A) in / mm	163	4151	163	4151
CLEARANCE*	@ FULL HEIGHT - BUCKET LEVEL	(B) in / mm	153	3881	153	3881
	@ FULL HEIGHT - BUCKET DUMPED	(C) in / mm	123	3136	122	3111
OVERALL LENGTH		(WB+F) in / mm	214	5424	214	5424
DIGGING DEPTH*		(H) in / mm	-3	-84	-3	-86
REACH*	@ MAXIMUM HEIGHT	(D) in / mm	39	982	39	982
	@ GROUND - BUCKET LEVEL	(F) in / mm	112	2844	112	2844
	DUMP ANGLE @ FULL HEIGHT	(E) degrees		-56		-60
BUCKET ANGLES	ROLLBACK @ GROUND	(G) degrees		48		48
	DUMP ANGLE @ GROUND	degrees		-140		-119
	LOADER RAISE	sec		3.50		3.31
CYCLE TIMES	LOADER LOWER	sec		2.63		2.48
	BUCKET DUMP	sec		2.65		1.81
	BUCKET ROLLBACK	sec		1.81		1.81

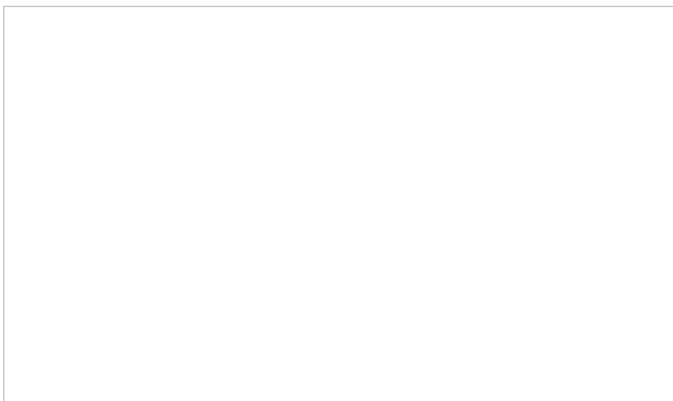
*The values may vary according to the tractor and loader settings/configuration.

NOTHING RUNS LIKE A DEERE.

Together with the John Deere dealership network, we are committed to raising the performance of your operations, maximising uptime and reducing operating costs. So we never stop investing in products and technologies that are quality-built and state-of-the-art.

Our capable dealer technicians – who are all John Deere trained – are familiar with every nut, bolt and byte in your equipment and skilled at diagnosing any potential problems.

You can count on your partnership with us and with our dealer network. After over 175 years in the farm equipment business, we can be sure that together we're better.



John Deere Financial – A range of finance options as powerful as our products. Contact your John Deere dealer for a comprehensive range of finance options to suit the specific needs of your business. Not available in all countries please consult your local dealer.

This literature has been compiled for worldwide circulation. While general information, pictures and descriptions are provided, some illustrations and text may include finance, credit, insurance, product options and accessories not available in all regions. Please contact your local dealer for details. John Deere reserves the right to change specification and design of products described in this literature without notice. The green and yellow colour scheme, the leaping deer logo and the JOHN DEERE word mark are trademarks of Deere & Company.

JohnDeere.com