

NEXOS  
VE VL F

**CLAAS**

Right on track.



Ready for anything.





## Built with you in mind.

When it comes to narrow-gauge tractors, customers are very discerning and their needs are highly specific. Since a plantation, operator or working implement cannot adapt to a tractor, the tractor range itself must offer the customer an especially comprehensive range of variants, a generous selection of tyres, a host of equipment extras, and of course the high-performance characteristics to bind all these together.

In whatever capacity the machine is utilised, whether for lifting, cultivating or transporting produce, whether PTO or hydraulically driven, or whether deployed in orchards or vineyards, the tractor must be up to any challenge – ready for anything, at any time.

To address these requirements, CLAAS has developed the NEXOS series:

- Three variants, VE, VL and F, with minimum overall widths of 1.00 m, 1.26 m and 1.46 m, respectively
- Four models, 210, 220, 230, 240, developing 72, 78, 88 and 101 hp, respectively
- Hydraulic circuit with output of up to 111 l/min

The NEXOS – meets every challenge.

An outstanding brand.





CLAAS has many years of experience in the design, manufacture and distribution of harvesting machinery in over 140 countries around the globe and provides an extensive range of tractors in 47 different models developing from 72 to 524 hp. CLAAS has been able to call on its huge wealth of expertise in developing the NEXOS series. The company's advanced product engineering and production processes and superior durability testing procedures underpin the high standards of quality and reliability of CLAAS products.

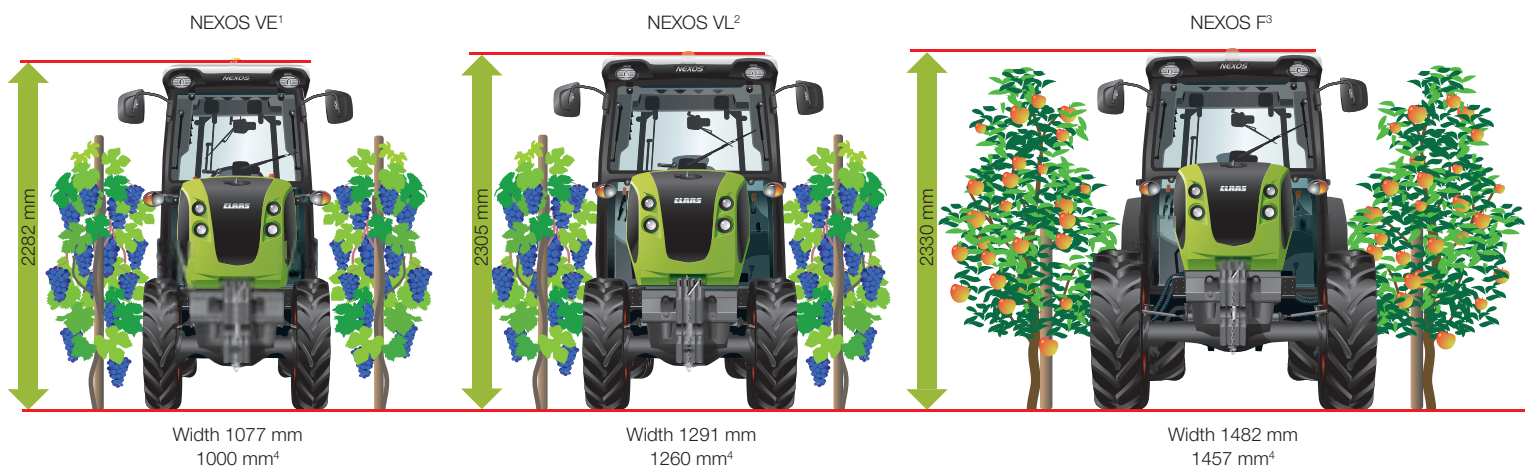




## Contents

Series and dimensions	8
Hydraulics	10
Engine and PTO shaft	12
Transmission	14
Cab	16
Maintenance	18
FIRST CLAAS SERVICE®, MAXI CARE®	20
Features	22
Specifications	23

# The perfect fit.



Tyres: <sup>1</sup> 9.5 R 28. <sup>2</sup> 11.2 R 28. <sup>3</sup> 12.4 R 28.

<sup>4</sup> Minimum width with rear-wheel drive and platform variant.







## Spoilt for choice.

With three variants (VE, VL and F), a wide selection of tyres, and alternative platform or cab configurations, the NEXOS can negotiate any row or plantation. CLAAS offers a total of 22 models in the NEXOS series developing 72 to 101 hp with a host of equipment options to satisfy just about every requirement in this demanding sector.

The wheelbase is purposefully adapted to the engine output to deliver high productivity and flexibility. Two high-performance four-cylinder engines guarantee smooth running. The 3.2 litre engine facilitates highly compact dimensions for greater manoeuvrability in the three smaller variants. The NEXOS 240 develops 101 hp from a 4.5 litre engine and, with its correspondingly longer wheelbase, is heralded as the top model in the series. All models except for the 230 and 240, VL and F are also available in a two-wheel drive configuration.

## NEXOS: tailored to your needs.

The basic equipment specification with full mechanical transmission and linkage operation can be further augmented and tailored to your requirements in all NEXOS machines. The hydraulic REVERSHIFT reverser, TWINSHIFT powershift transmission, hydraulic output of up to 111 l/min, up to four electronic spool valves, a cab with air-conditioning system and active-carbon filter, and the front linkage and front PTO shaft enhance the flexibility and convenience that are characteristic of NEXOS tractors.

Configure your very own NEXOS from our huge range of options, perfectly tailored to your every need.



Series and dimensions



## Greater possibilities.

With its enormous hydraulic output, the NEXOS has been specially engineered for high-intensity operations with attached implements or multiple equipment combinations – which means you can rise to any challenge and be assured of success.

The NEXOS boasts a hydraulic pump capacity of 85 l/min as standard, delivered via two pumps. Of this capacity, 59 litres, delivered via one pump, is reserved exclusively for the spool valves and rear linkage. The NEXOS can be optionally equipped with a three-pump hydraulic circuit, delivering a combined pump capacity of 111 l/min (including 26 litres just for the steering system), for devices or device combinations with particularly high hydraulic requirements.

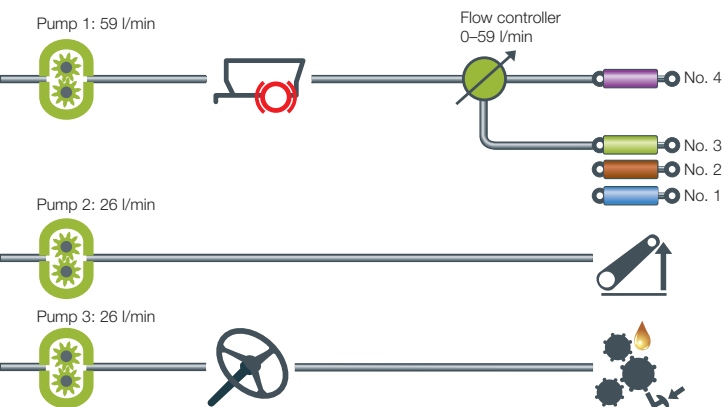
In the three-pump configuration, the rear linkage, steering mechanism and spool valves are supplied independently, facilitating the seamless execution of several overlapping functions, such as powering a hydraulic motor while simultaneously steering the vehicle and raising the front and rear linkages. Additionally, where hydraulic requirements are low, additional fuel can be saved by driving at a reduced engine speed.

The NEXOS can be equipped with up to four mechanical spool valves (including one with flow control). The tractor can also be equipped with four electronic spool valves, offering the greatest standard of comfort and convenience. These are controlled via the ELECTROPILOT joystick and two rocker switches. Eight hydraulic connections at the rear of the tractor and six connections for the front working implements are provided in the top equipment specification.

Convenient external control with mechanical or electronic rear linkage



# Solid hydraulic performance.



## The power within.

With a maximum lifting capacity of 3.1 tonnes (VE max. 2.6 tonnes) at the rear linkage's mounting points, the NEXOS can cope with just about any implement. A hydraulic lift rod and hydraulic side stabilisers are available for VL and F models for high-precision implement guidance, particularly over sloping terrain.

The rear linkage in both the cab and platform versions of the NEXOS is also available with a mechanical or optional electrohydraulic TCE 6 operating unit. Whether mechanically or push-button operated, the optional external controls on the mudguards make for rapid and safe attachment of working implements.

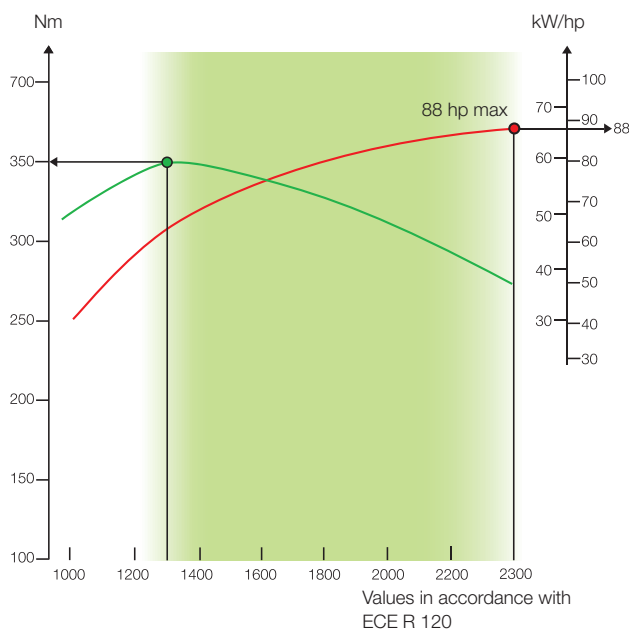
The folding front linkage with integrated front PTO shaft enables various implement combinations to be used and greatly reduces the number of passes. Combined operations reduce time requirements and costs and boost efficiency.



Hydraulics

# Combined power.

NEXOS 230

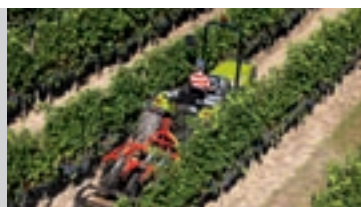


## Lively and efficient.

Four-cylinder engines developing outputs ranging from 72 to 101 hp deliver a comfortable driving experience. Modified to the tractor output, the 3.2 litre engine ensures a higher standard of manoeuvrability in smaller models. The 4.5 litre engine in the largest model develops greater output, and offers an extended wheelbase for superior grip and stability with larger implements.

Both engines meet the stringent requirements of the Stage IIIa (Tier 3) exhaust emissions standard, using internal exhaust gas recirculation, turbochargers, charge-air coolers (with the exception of the 210) and mechanical fuel injection. The high-torque engines exhibit extremely lively response characteristics, enabling the tractor's full output to be harnessed in all applications.

	Cylinders	Cubic capacity	Output at nominal engine speed ECE R 120
<b>NEXOS</b>	qty.	cm <sup>3</sup>	kW/hp
<b>240 F, VL</b>	4	4500	74/101
<b>230 F, VL, VE</b>	4	3200	65/88
<b>220 F, VL, VE</b>	4	3200	57/78
<b>210 F, VL, VE</b>	4	3200	53/72



With its extended wheelbase, the 240 exhibits a particularly impressive tractive capacity in tillage operations.



## Engine speed made to measure.

With two PTO shaft speeds available (540/540 ECO package or 540/1000), the NEXOS is well equipped to deliver the ideal shaft speed for any application. PTO speeds of 540 and 1,000 rpm are achieved at a low-consumption, high-torque engine speed of 1,950 rpm. In 540 ECO mode, the full PTO shaft speed can be harnessed at an engine speed of just 1,650 rpm, enabling huge fuel savings to be made in low-intensity operations such as fertiliser application.

The product range also includes an auxiliary rear PTO shaft for highly specific applications. Regardless of the implement attached – for example, a fertiliser spreader or mulcher – the PTO shaft is always engaged very gently, with either hydraulic or electrohydraulic support.



Engine and PTO shaft



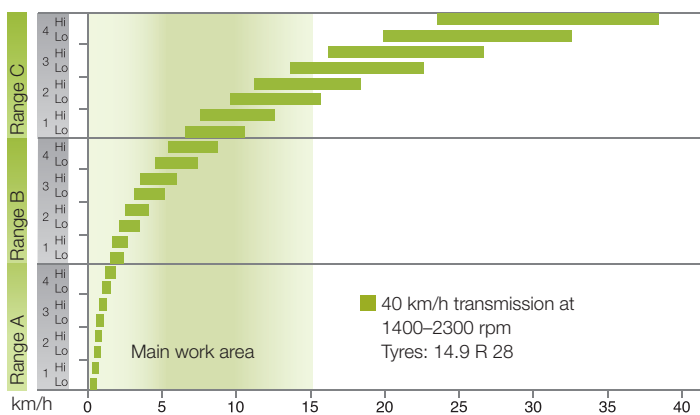
## Four transmission variants to choose from.

With four transmission variants to choose from, the NEXOS offers the perfect solution for every user:

- 12F/12R with mechanical reverser
- 24F/24R with mechanical reverser and splitter
- 24F/24R with mechanical reverser and TWINSHIFT two-stage powershift
- 24F/12R with REVERSHIFT hydraulic reverser and TWINSHIFT two-stage powershift

The 24 gears deliver the ideal speed in all types of operation. At rated engine speed, for instance, a minimal speed of 430 m/h is possible. The TWINSHIFT power transmission enables each gear to be selected effortlessly via a push button on the gear knob and without interrupting tractive output or engaging the clutch. All NEXOS transmission models have been engineered to ensure low power losses, meaning you benefit from maximum efficiency and reduced fuel consumption.

The all-wheel drive is push-button activated and electrohydraulically engaged. To avoid unnecessary tyre wear, the all-wheel drive is automatically engaged and disengaged at over 14 km/h. It is also automatically engaged when braking to ensure a higher standard of safety on the road. This means that your NEXOS can be safely brought to a standstill at any time.



# Gear shifting the way you like it.

With REVERSHIFT, you can forget about the clutch pedal.

1 REVERSHIFT lever for rapid and comfortable turning manoeuvres, particularly at headlands or when stacking boxes.

2 Clutch button on the shift lever for effortless gear changing.



Transmission

# Relaxing work.



## A safe and comfortable ride.

With a choice of cab or platform versions, the NEXOS is highly versatile in the field. Large, wide-opening doors and a non-slip step make access to the vehicle safe and convenient. The front (optional) and rear windows can be opened for natural ventilation. The powerful air-conditioning unit provides for a cool working environment in hot and dusty conditions.

An active carbon filter can be fitted ex factory to protect the operator during crop spraying operations. Together with a well-sealed cab and powerful ventilation system, the filter ensures the driver is well protected even during intensive crop spraying applications.

An air-sprung driver's seat is optionally available for both cab and platform versions. The steering column is also fully adjustable to ensure a comfortable seating position for the driver.

Folding marker lights on the NEXOS VE prevent damage to crops.







## Compact exterior, spacious interior.

In developing the NEXOS, CLAAS engineers placed huge emphasis on creating a spacious environment for the driver. The cab is extremely spacious for a tractor of its size and offers generous leg room and a comfortable working environment, even for tall drivers.

The NEXOS boasts an outstanding all-round view, thanks to large glass windows. The large glazed area at the rear of the cab in particular offers an unrestricted view of the attachment and working area.

The ergonomic arrangement of operating controls and the clear logic of their allocated functions enables the NEXOS to be operated comfortably and effortlessly throughout long working days. The instrument panel provides clear and concise information regarding the operating status of the NEXOS, including vehicle speed and engine and rear PTO shaft speeds.



The roll bar can be folded down in no time without the need for tools.

Cab



## Ready in a flash.

When the NEXOS is called upon to give its all in hot, dusty conditions in narrow rows or plantations, everything needs to be right. Daily maintenance work must be as straightforward as possible, since we all know from experience that nobody likes having to face complicated or awkward tasks.

Thanks to its one-piece bonnet, the entire engine compartment can be accessed at the flick of a catch. The air filter is directly accessible, allowing it to be quickly checked and cleaned. The air conditioning radiator slides out, and the air filter removed in no time at all. When required, radiator surfaces can be cleaned quickly and easily.

Easily accessible from the exterior, the cab air filter can be cleaned very quickly to ensure an ongoing supply of fresh air to the cab. All of the materials used in the cab are highly robust, resistant to dirt and can be cleaned effortlessly.

# Short maintenance times, long intervals.



## Ease of maintenance.

The NEXOS boasts particularly long maintenance intervals. 500-hour engine oil change intervals reduce downtime and costs. The hinged bonnet is also extremely convenient and enables the fuel tank to be accessed and filled with ease.



Good partners never leave you in the lurch.



FIRST CLAAS SERVICE® around the clock.

Our many years of experience and enormous knowledge base have familiarised us like no one else with the working methods and individual requirements of every farming business. So we know exactly what it all comes down to, including the service aspects. Our FIRST CLAAS SERVICE® package is synonymous with absolute reliability and professionalism. Or, to put it simply: we're there for you right away when you need us. That goes for the NEXOS just as it does for all other CLAAS machines.



## Rest assured.

We are dedicated to supplying the ORIGINAL CLAAS spare parts you require whenever you need them. Our service is extremely well organised and proven over many years around the globe. We endeavour to do our utmost to minimise potential downtime, because we know as well as you do that time is money.

## Committed teams.

Our highly trained service teams thoroughly enjoy their work and understand the issues perfectly, since expert knowledge and commitment are essential to successful teamwork. You will therefore always remain the kind of customer we're glad to have – completely satisfied.

## Cost-conscious investment in efficiency is a recipe for success.

The individual MAXI CARE® service packages offer the highest level of safety for all CLAAS products. Attention to proper service means increased reliability. We provide a flexible selection of modules such as extended warranty to keep costs transparent and on track.

There are customised options and combinations for your CLAAS machine:

- Service contract maintenance services at a fixed price in accordance with the operator's manual
- MAXI CARE® warranty extension

Ask your authorised CLAAS dealer for more information.

FIRST CLAAS SERVICE®  
MAXI CARE®

# Every reason to choose the NEXOS.

Unrivalled convenience.

- Cab or platform version available
- Cab with air-conditioning system or natural ventilation through opening front and rear windows
- Active carbon filter for additional driver protection during crop spraying
- Large, wide-opening doors and non-slip step for safe and convenient access to the cab
- Optional air-sprung driver's seat
- Adjustable steering column for a comfortable seating position
- Perfect ergonomics thanks to optimum layout of controls
- Large glass windows in the cab for an outstanding all-round view
- Rapid and secure attachment of working implements using external operating controls on mudguards
- FIRST CLAAS SERVICE®

Greater possibilities.

- Three variants, VE, VL, and F, developing 72 to 101 hp
- Hydraulic pump capacity of 85 l/min or optional combined pump capacity of 111 l/min with 3-pump hydraulic circuit
- Fuel-efficient four-cylinder engines
- Three PTO shaft speeds for the perfect speed in any application
- Four transmission variants, optionally with electrohydraulic REVERSHIFT reverser and TWINSHIFT two-stage powershift transmission
- Wheelbase purposefully adapted to engine output for high productivity and flexibility
- Front linkage with optional integrated front PTO shaft available ex factory
- Max. rear linkage lifting capacity of 3.1 t (VE max. 2.6 t)
- Up to four mechanical spool valves available, including one with flow control
- Four electronic spool valves optional

# NEXOS

		240 F-VL	230 F-VL-VE	220 F-VL-VE	210 F-VL-VE
<b>Engine</b>					
Manufacturer		FPT	FPT	FPT	FPT
Number of cylinders/intake		4/TI	4/TI	4/TI	4/T
Cubic capacity	cm <sup>3</sup>	4500	3200	3200	3200
Nominal engine speed	rpm	2200	2300	2300	2300
Output at nominal engine speed (ECE R 120) <sup>1</sup>	kW/hp	74/101	65/88	57/78	53/72
Engine speed at max. torque	rpm	1250	1300	1250	1250
Max. torque	Nm	430	350	330	277
Torque rise	%	34	30	39	26
Visco fan		●	●	●	●
Max. fuel capacity with additional fuel tank	l	94	94	94	94
Oil change interval	h	500	500	500	500
Upper exhaust		■	■	■	■
Lower exhaust		■	■	■	■

		240 F	230-220- 210 F	240 VL	230-220- 210 VL	230-220- 210 VE
<b>Transmission</b>						
Top speed	km/h	40/30	40/30	40/30	40/30	40/30
12F/12R with mechanical reverser and 30 km/h transmission		■	■	■	■	■
24F/24R with mechanical reverser and splitter and 30 or 40 km/h transmission		■	■	■	■	■
24F/24R with mechanical reverser and TWINSHIFT two-stage powershift and 30 or 40 km/h transmission		■	■	■	■	■
24F/12R with REVERSHIFT hydraulic reverser and TWINSHIFT two-stage powershift and 30 or 40 km/h transmission		■	■	■	■	■
Min. speed with 12F/12R transmission	km/h	1.25	1.25	1.25	1.25	1.20
Min. speed with all transmissions except 12F/12R	km/h	0.45	0.45	0.45	0.45	0.43

<b>PTO</b>						
Clutch type depending on option		Mechanically/hydraulically supported				
540/1000 rpm		■	■	■	■	■
540/540 ECO rpm		■	■	■	■	■
PTO shaft*		○	○	○	○	○

<b>Road safety</b>						
Braking system (multiple discs in oil bath and all-wheel auto activation)		●	●	●	●	●
Hydraulic trailer braking system		●	●	●	●	●

<b>All-wheel drive front axle<sup>2</sup></b>						
Electrohydraulic operation		●	●	●	●	●
Self-locking differential front/rear (self-locking multidisc clutch at front / dog clutch at rear)		●	●	●	●	●
Max. steering angle	Degrees	52	52	54	54	55
Castor angle	Degrees	6	6	10	10	10
Angle of oscillation	Degrees	8	8	8	8	6
Turning radius	m	3.76	3.66	3.75	3.64	3.55
External width	mm	1482	1482	1291	1291	1077

● Standard ○ Optional ■ Available – Not available

<sup>1</sup> Values correspond to permissible values in accordance with 97/68/EC, ISO TR 14396 or 2000/25/EC.

<sup>2</sup> Rear-wheel drive available on all models except 240 F, 230 F, 240 VL and 230 VL. 30-km/h transmission with rear-wheel drive.

# NEXOS

		240 F	230-220- 210 F	240 VL	230-220- 210 VL	230-220- 210 VE
<b>Hydraulic system</b>						
Engine speed at max. hydraulic pump output	rpm	2200	2300	2200	2300	2300
Hydraulic pump output for steering, brakes and own requirements	l/min	25	26	25	26	26
Max. operating pressure	bar	190	190	190	190	190
2-pump hydraulic circuit		●	●	●	●	●
Hydraulic pump output for rear linkage and spool valves	l/min	57	59	57	59	59
Max. operating pressure	bar	190	190	190	190	190
3-pump hydraulic circuit		○	○	○	○	○
Hydraulic pump output for spool valves	l/min	57	59	57	59	59
Hydraulic system for rear linkage	l/min	25	26	25	26	26
Max. operating pressure	bar	190	190	190	190	190
Number of mechanical spool valves (min/max)		2–4	2–4	2–4	2–4	2–4
Four electronic spool valves, two of which joystick-controlled		○	○	○	○	○
Flow control on all electronic spool valves		●	●	●	●	●
<b>Rear linkage</b>						
Max. lifting power at ball ends	kg	3160	3160	3160	3160	2610
Continuous lifting power at 610 mm	kg	2160	2160	2160	2160	1730
External operation for rear linkage		○	○	○	○	○
TRACTO CONTROL ELECTRONIC (TCE 6)		○	○	○	○	○
Hydraulic lift supports and hydraulic side stabilisers		○	○	○	○	–
<b>Front linkage</b>						
Front linkage		○	○	○	○	○
Max. lifting power at ball ends	kg	2800	2800	2800	2800	2800
<b>Cab</b>						
Cab/platform		■ / ■	■ / ■	■ / ■	■ / ■	■ / ■
Driver's seat, mechanically suspended		●	●	●	●	●
Driver's seat, air-suspended		○	○	○	○	○
Steering column, height and angle adjustable		■	■	■	■	■
Heating		●	●	●	●	●
Air conditioning		○	○	○	○	○
Opening rear window		●	●	●	●	●
Opening front screen		●	●	●	●	●
Rear window wipers		○	○	○	○	○
Max. number of work lights		2 front / 2 rear	2 front / 2 rear	2 front / 2 rear	2 front / 2 rear	2 front / 2 rear
<b>Weight</b>						
(all-wheel drive, standard tyres, with oil and fuel, without driver)						
Rear wheels		14.9 R 28	14.9 R 28	14.9 R 28	14.9 R 28	13.6 R 28
Front wheels		9.5 R 20	9.5 R 20	7.50 R 18	7.50 R 18	7.50 R 16
Weight without ballast (platform/cab)	kg	2965/3200	2895/3130	2795/3110	2725/3040	2595/2810
Max. front ballast without front lift linkage	kg	365	365	245	245	245
Permissible total weight	kg	4400	4400	4400	4400	4100

● Standard ○ Optional ■ Available – Not available

CLAAS continually develops its products to meet customer requirements. This means that all products are subject to change without notice. All descriptions and specifications in this brochure should be considered approximate and may include optional equipment that is not part of the standard specifications. This brochure is designed for worldwide use. Please refer to your nearest CLAAS dealer and their price list for local specification details. Some protective panels may have been removed for photographic purposes in order to present the function clearly. To avoid any risk of danger, never remove these protective panels yourself. In this respect, please refer to the relevant instructions in the operator's manual.

Specifications



# NEXOS

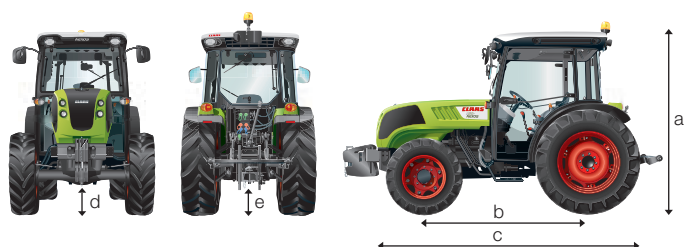
Dimensions		240 F	230-220- 210 F	240 VL	230-220- 210 VL	230-220- 210 VE
Rear wheels		380/70 R 24	380/70 R 24	12.4 R 28	12.4 R 28	9.5 R 28
Front wheels		280/70 R 18	280/70 R 18	7.50 R 16	7.50 R 16	6.50 R 16
Height with cab (a)	mm	2330	2330	2305	2305	2282
Height with platform (roll bar extended/retracted)	mm	2480/1489	2480/1489	2455/1464	2455/1464	2432/1439
Minimum external width with rear-wheel drive and platform	mm	1457	1457	1260	1260	1000
Minimum external width with all-wheel drive and cab	mm	1482	1482	1291	1291	1077
<b>Length</b>						
Wheelbase (all wheel drive) (b)	mm	2161	2074	2185	2098	2098
Overall length (without additional front ballast) (c)	mm	4078	3991	4078	3991	3991
<b>Ground clearance</b>						
Front axle with all-wheel drive (d)	mm	294	294	306	306	271
Rear axle (without swinging drawbar) (e)	mm	355	355	330	330	295

## Tyres for rear-wheel drive version

Rear tyres	Front tyres	F	VL	VE
13.6 (340/85) R 24	6.00-16	–	■	■
13.6 (340/85) R 24	6.50-16	–	–	■
13.6 (340/85) R 24	7.50-16	–	■	–
360/70 R 24	6.00-16	–	–	■
360/70 R 24	6.50-16	–	–	■
9.5 (250/85) R 28	6.00-16	–	–	■
9.5 (250/85) R 28	6.50-16	–	–	■
11.2 (280/85) R 28	6.00-16	–	■	■
11.2 (280/85) R 28	6.50-16	–	–	■
11.2 (280/85) R 28	7.50-16	–	■	–
12.4 (320/85) R 28	6.00-16	■	■	–
12.4 (320/85) R 28	6.50-16	■	–	■
12.4 (320/85) R 28	7.50-16	■	■	–
13.6 (340/85) R 28	6.50-16	■	■	–
13.6 (340/85) R 28	7.50-16	■	■	–
380/70 R 28	7.50-16	■	–	–
14.9 (380/85) R 28	7.50-16	■	–	–

## Tyres for all-wheel drive version

Rear tyres	Front tyres	F	VL	VE
12.4 (320/85) R 24	6.50-16	–	–	■
13.6 (340/85) R 24	6.50-16	–	–	■
13.6 (340/85) R 24	10.0/75 R 15.3	–	–	■
360/70 R 24	240/70 R 16	–	–	■
380/70 R 24	260/70 R 16	–	■	–
380/70 R 24	280/70 R 18	■	–	–
420/70 R 24	280/70 R 20	■	–	–
480/65 R 24	280/70 R 18	■	–	–
9.5 (250/85) R 28	6.50 R 16	–	–	■
11.2 (280/85) R 28	6.50 R 16	–	–	■
12.4 (320/85) R 28	7.50 R 16	–	■	■
13.6 (340/85) R 28	7.50 R 16	–	■	■
13.6 (340/85) R 28	8.25 R 16	–	■	–
13.6 (340/85) R 28	280/70 R 18	–	■	–
360/70 R 28	280/70 R 16	–	–	■
380/70 R 28	280/70 R 20	■	–	–
14.9 (380/85) R 28	7.50 R 18	–	■	–
14.9 (380/85) R 28	280/70 R 18	–	■	–
380/85 R 28	9.5 R 20	■	–	–
420/70 R 28	280/70 R 18	–	■	–
420/70 R 28	260/80 R 20	■	–	–
420/70 R 28	300/70 R 20	■	–	–
420/70 R 28	320/70 R 20	■	–	–
480/65 R 28	320/70 R 20	■	–	–



● Standard ○ Optional ■ Available – Not available

CLAAS UK  
Saxham  
Bury St. Edmunds  
Suffolk  
IP28 6QZ  
Tel 01284 763100  
claas.co.uk  
info-uk@claas.com  
381012130112 KK Be 0412

