

AVERO  
240 160

**CLAAS**

My declaration of  
independence.



Compact design  
gives you  
independence.





## The compact class by CLAAS.

The time is right. Everything indicates perfect harvest quality. The AVERO by CLAAS is the ideal machine for smaller and mid-sized operations with a desire for their own equipment.

Compact, high-performance, reliable and equipped with all the features you're accustomed to in CLAAS machines: easy operation, economical upkeep and simple maintenance.

### **It's all yours.**

You can start work whenever you want without having to twiddle your thumbs waiting for someone else. Investment in your own technology is an investment in your own independence.

### **The first in its class with APS. AVERO 240.**

The APS threshing and separation system already performs beautifully in the LEXION and the TUCANO. Now, this proven threshing technology by CLAAS is available for the first time in the compact class.

For your harvest, APS means:

- Significantly faster crop flow
- Significantly greater separation
- The MULTICROP concave for all crops
- Up to 20% more throughput with no increase in fuel consumption

### **Proven threshing technology: AVERO 160.**

The AVERO 160 uses a conventional CLAAS threshing unit which has an excellent track record in practical use.

Compact design is  
powerful.





## Contents

### **The compact class meets your needs.**

VISTA CAB, lighting	8
Multifunction lever, CIS	10

### **The compact class is versatile.**

Cutterbar mount	14
Automatic functions	16
VARIO cutterbar	18
CONSPEED LINEAR, RAKE UP, folding cutterbar, FLEX cutterbar	20

### **The compact class makes you productive.**

APS threshing system	24
CLAAS threshing unit	26
Residual grain separation, straw walker technology	28
Cleaning, grain tank	30
Straw management, PROFI CAM	32

### **The compact class delivers high performance.**

Engine, drive train	36
Maintenance, tyres	38
FIRST CLAAS SERVICE®, MAXI CARE®	40
Technology in detail	42
Features	47
Specifications	48

The compact  
class meets  
your needs.





**A comfortable workplace that leaves nothing to be desired.**

- Spacious VISTA CAB
- Well-designed lighting system
- Easy-to-use multifunction lever
- CLAAS INFORMATION SYSTEM (CIS)

Deluxe cab



## Spacious VISTA CAB.

It was a long working day, but it didn't feel like one. When this is the thought in your mind as you park your AVERO for the night, our engineers have achieved their goal.

They created a cab that's so comfortable and ergonomic that the operator can focus entirely on his work. Friendly design, plenty of space, good visibility on all sides and easy-to-operate instruments make a day threshing in the AVERO as stress-free as it gets.

Spacious, exceptionally quiet cab with:

- A well-organised operating panel with superior ergonomics
- A steering column adjustable in three directions
- A comfortable passenger seat
- A/C MATIC automatic climate control
- The master terminal compartment
- Illuminated inspection window for monitoring returns
- Threshing concave controls

The AVERO also offers the same easy, convenient operation as the LEXION and the TUCANO. For example, the cutterbar, threshing unit and grain tank offloading are activated via electrohydraulic circuits.

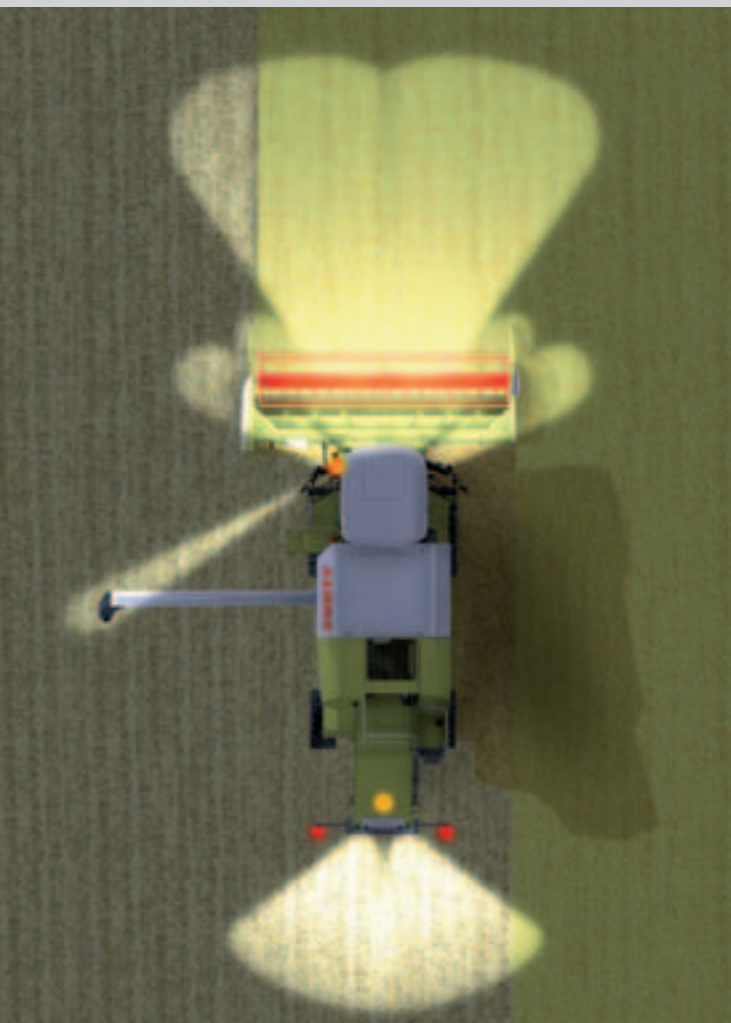


Cab comfort.





# Everything that makes good operators better.



## Powerful lighting.

The lighting in the AVERO ensures excellent visibility during the twilight hours and in the dark. Up to eight work lights ensure optimal lighting of your immediate work environment. In addition to the legally required lighting for on-road use, the AVERO can also be equipped with extra lighting for folding front attachments.

Furthermore, the following functional areas are equipped with spotlights to ensure the best visibility night and day:

- Returns check
- Grain tank
- Grain tank discharge auger tube
- Sieve pans

# Intelligent harvest aids at work.



## Versatile multifunction control lever.

The productivity of a harvest job is determined by how well an operator controls the combine. With its ergonomically shaped multifunction lever, the AVERO offers outstanding driving comfort and ease of operation.

The multifunction lever is used to regulate ground speed and control many other functions conveniently:

- Direction of travel
- Cutterbar and reel settings
- Cutterbar brake
- Grain tank offloading ON / OFF
- Pivoting the grain tank discharge auger



Yield recording in CIS.



Fuel consumption metering in CIS.



## Well-organised information terminal.

The compact CLAAS INFORMATION SYSTEM (CIS) terminal is ergonomically integrated in the operating panel and gives the operator a quick overview of a wide variety of important machine data. Thus the interaction between the operator and the machine can be continuously optimised during a job.

- 1 Fan and threshing drum speed
- 2 Fuel tank level
- 3 Temperature display
- 4 Cutting positions and height
- 5 Throughput monitoring
- 6 Message window
- 7 Information field



Well-organised controls.

Multifunction control lever  
CIS

The compact class is versatile.





**It takes the crops as they come.**  
Grain, rapeseed, maize, soybeans, clover, peas, sunflowers and more.

Cutterbar

# Designed to use the successful LEXION and TUCANO attachments.

## Standardised front attachments.

The compact AVERO was developed to unite a wide variety of options at a high standard, offering optimal throughput performance and long-term reliability combined with great versatility and minimal setup time.

The AVERO has the same cutterbar mount as the LEXION and TUCANO. Our top machines also served as the model for the development of further high quality performance and equipment features.

## Practical central locking.

A single lever on the left side of the cutterbar simultaneously operates all locks.

- Safe, fast locking mechanism
- Fast, simple attachment and removal of the cutterbar

## Central multicoupler.

The AVERO has only one connector to link all hydraulic and electric functions to the cutterbar.

- Saves time with fewer tasks for attachment and removal
- No danger of confusion thanks to the integrated design
- Easy to connect, even under pressure
- Environmentally friendly with no oil leakage

## Replacement knife bar and crop lifters.

All CLAAS cutterbars are equipped with a replacement knife bar ex-factory. The knife sections are made of hardened material and are therefore extremely durable. The use of crop lifters enables pickup of laid crops in particular without loss while reducing the intake of stones. Crop lifter replacements can be carried conveniently on the back side of the cutterbar.

Deluxe comfort.





### Hydrostatic reel drive.

A variable displacement pump on the basic machine supplies a maximum torque of 1,000 Nm at the reel.

- Plenty of pulling power thanks to high torque
- Greater efficiency than gear pumps
- Closed hydraulic circuit for optimal reel rotation
- Fast adjustment of the reel speed

### Hydraulic reverse.

Blockages are taken care of easily; the hydraulic system enables protective reversing with high starting torque. The hydraulic reverse can be actuated conveniently with a toggle switch in the cab. The direction of rotation of the hydraulic reel drive also changes automatically, providing additional support for the reversing procedure.

### Adjustable stripper rails.

The spacing between the stripper rails and the intake auger can be easily set externally on the C 370, C 430 and C 490 cutterbars.

### Stable trailer for road transport.

Everything to save you time: The trailer provides compact, convenient and safe storage for the cutterbar. It's locked in seconds with two bolts.

Made-to-measure compartments are designed for transporting the accessories you need for harvesting rapeseed. The rubber-coated floor provides non-slip, protective, theft-proof storage.

Standard cutterbar with front rapeseed attachment.



Cutterbar mount

# Top cutting quality - automatically.

## Optimum ground contour following.

In order to ensure optimum following of the ground contours, CLAAS cutterbars are equipped with the CLAAS CONTOUR and AUTO CONTOUR automatic cutterbar control systems for ideal results at all times.

## CLAAS CONTOUR.

The cutterbar with CLAAS CONTOUR adapts automatically to uneven ground along the direction of travel. Choose a ground pressure and CONTOUR keeps it constant. Every time the cutterbar is lowered, the pre-set cutting height mechanism automatically moves to the preselected cutting height.

## AUTO CONTOUR.

AUTO CONTOUR goes a step further by compensating all ground irregularities, including those which are transverse to the direction of travel. Sensor bands below the cutterbar provide early detection of undulations and trigger the corresponding cutterbar cylinders on the feeder housing.

- Electronic sensors detect the hydraulic pressure in the system and react quickly
- Valve-controlled, nitrogen-filled accumulators ensure optimal shock absorption with front attachments of different weights

AUTO CONTOUR is activated simply by pressing the height adjustment button on the multifunction control lever.



Sensor bands detect the position of the cutterbar.







### A more cost-effective way to work.

With fully automated comparison of the current status and the setpoint, AUTO CONTOUR adapts the cutterbar position optimally to the terrain. This greatly simplifies the work of harvesting, particularly with large cutting widths, at night, with laid crops, on slopes and rocky ground. AUTO CONTOUR helps increase performance and make the use of the combine pay even greater dividends.

### Automatic reel control.

The reel speed – and thus the circumferential reel speed is adjusted automatically in proportion to the ground speed. The driver can set and store different ratios of ground speed to reel speed.

### Infinitely variable reel speed.

The reel speed can be adjusted infinitely between the feed, synchronised, and run-on speeds. A digital speed sensor enables precise speed adjustment. A variable displacement pump on the AVERO supplies a maximum torque of 1,000 Nm at the reel. The result: plenty of pulling power thanks to high torque. A hydraulic overload protection system provides protection against damage.



The automated reel control is activated by means of a toggle switch on the side console.



Automatic functions



### A unique competitive edge.

The AVERO is the first combine harvester to unite a machine of the compact class with the VARIO high-performance cutterbar. This is a unique combination from which you'll reap the benefits every time you use it:

- Highest throughput due to particularly even crop intake
- Two different VARIO cutterbar widths: V 540, V 600
- Hydrostatic reel drive
- Reliable, rugged multifinger intake auger

### Even crop flow.

The VARIO high-performance cutterbar feeds the crop uniformly to the threshing unit. This is the only way to increase performance and to utilise the full design capacity. Furthermore, it reduces fuel consumption and supports the operator in significantly increasing productivity.

- High speed stability in the engine, threshing and separation units as well as during cleaning
- Extremely high performance consistency
- No load peaks in the threshing equipment
- Protection of the drives

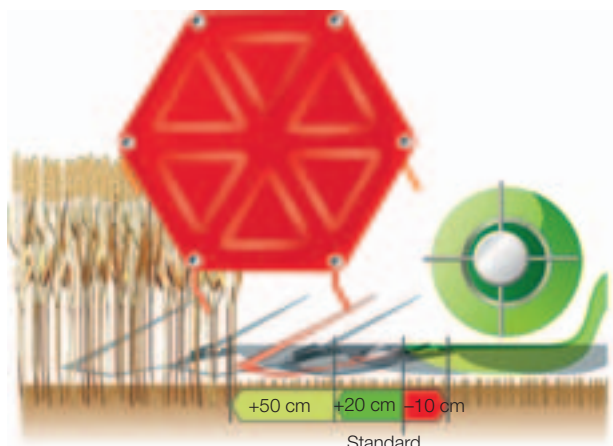


Left-hand side knife can be switched off.

# The first compact machine with VARIO.

## Integrated rapeseed equipment.

Ripe rapeseed pods need careful handling during harvest because they often explode and the grains start flying in all directions. Thus, the rapeseed deflector and extension are invaluable components of the rapeseed equipment on the VARIO cutterbars; they minimise losses on a long-term basis.



For grain harvesting, the cutterbar table can be continuously extended forward up to 20 cm or retracted by as much as 10 cm to optimise the crop flow and maximise output.

For rapeseed, the cutterbar table can be moved forward by 50 cm – the integrated rapeseed table is ready for use in no time.

Hydraulically driven side cutters on the right and on the left can be switched on and off at will. They are mounted quickly and easily without additional tools.

The knife bar comes with an integrated hydraulic drive.

Knife position -10 cm



Knife position +20 cm



Knife position +50 cm



VARIO cutterbar

# Available for every crop.

## Maximum effectiveness. CONSPEED LINEAR.

A high picking rate with protective handling of maize ears at the same time has a critical influence on the throughput of the machine. The CONSPEED LINEAR maize harvester meets these requirements and is perfectly matched to the capabilities of the AVERO.

- 4 and 5 row versions with 70 and 75 cm row spacing
- Linear snapping rollers
- Knives coated with tungsten carbide
- Fast, easy speed adjustment
- Energy-saving drive thanks to a redesigned, rugged snapping gear
- Electrohydraulic snapping plate adjustment
- Horizontal chopper

The CONSPEED LINEAR can be equipped for sunflower harvesting with a sunflower kit.

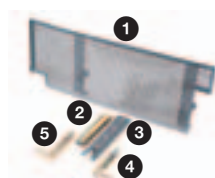
## Clean intake. RAKE UP.

RAKE UP is a new and unique pick-up attachment. The tines are mounted on six tine bars. They are controlled and retract with an additional movement to the side when the crop is fed onto the belt. The speed of the intake unit is continuously variable and can be hydraulically adjusted from the cab.

- Reliable pick-up and high output, even under the most difficult field conditions
- Clean rake intake of the crop
- A two-part compressing rake ensures efficient crop flow
- Can be used for virtually any crop
- Sturdy, durable design of the RAKE UP



Changing gear to adjust the speed.



### Sunflower kit:

- 1 Rear wall panel to minimise losses
- 2/3 Knife holder and knife between the snapping plates
- 4/5 Right/left chain guide.



The folding cutterbar saves an enormous amount of time.

Narrow streets, cramped paths, heavy traffic: With its folding cutterbar, the AVERO lets nothing stand in the way of top daily output.

The folding cutterbars eliminate the attachment and detachment of the cutterbar, ensure optimal handling during travel with outstanding visibility and enable transfers from one field to the next with practically no interruption.

- No additional trailer necessary
- Drastically reduced set-up times
- Tremendous savings of time and costs
- Extremely easy operation
- High operational reliability
- Safer in road traffic
- Greater efficiency

FLEX cutterbar: coveted down-to-earth quality.

Soybeans grow in pods immediately above the ground. Thus, it is necessary to cut the crop directly above the soil to avoid loss during harvesting. This is the only way to ensure that all pods are collected for processing.

CLAAS FLEX cutterbars are therefore equipped with a 100-mm flexible knife bar that automatically adapts to even slight ground undulations. These cutterbars can also be used for peas and other specially cultivated crops such as clover.



CONSPEED LINEAR  
RAKE UP  
Folding cutterbar  
Flex cutterbar

The compact class makes you productive.





**240  
AVERO**

**CLAAS threshing technology.**

- Outstanding throughput with the APS threshing system
- Effective residual grain separation system
- High-performance 3-D cleaning system
- Perfect straw management

Threshing technology

# 20% more throughput, 0% more fuel.

## The unique APS threshing system.

The AVERO 240 is the first in its class with APS. The distinct competitive edge of this trend-setting threshing system appears well before the threshing drum as the dramatic acceleration of the crop flow from 3 m/s to 20 m/s triggers a chain of extremely efficient processes:

- The pre-accelerator separates the crop more thoroughly
- The crop flow is particularly even and up to 33% faster
- Higher centrifugal forces separate considerably more grain
- Up to 30% of all grains are already sorted in the pre-separation concave directly below the accelerator, significantly reducing the load on the main concave

This results in a net performance increase of up to 20% with no rise in fuel consumption. APS pays for itself.

## Versatile pre-cleaning concave.

The pre-cleaning concave is designed as a MULTICROP concave and can therefore handle any crop. The option of quickly changing two concave sieves minimises setup time and maximises efficiency







### Long threshing channel.

In the CLAAS APS threshing system, we've succeeded in wrapping the main concave much farther around the threshing drum than in conventional machines. No other threshing unit offers an angle of wrap of 151°. You benefit from gentle but thorough threshing with a large concave clearance and low drum speed with reduced fuel consumption.

### Large stone trap.

The large stone trap ensures a high degree of safety. It is easy to open from the side and is self-emptying.

### Improved grain quality.

For optimal deawning and decortication, the APS threshing system is equipped with multi-level adjustment options and additional components. These include, for example, the intensive threshing unit and the deawning plates. The deawning plates are activated in mere seconds with a lever above the feeder housing.

Together with the other APS benefits, the result is impressive: optimal separation efficiency combined with outstanding harvest quality.

MULTICROP  
concave/stone  
trap.



APS threshing system

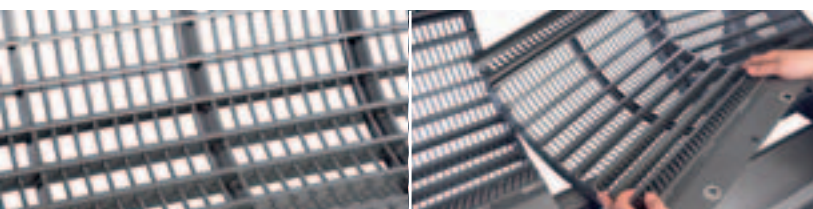
# Outstandingly versatile and absolutely reliable.



## The champion in all fields.

The AVERO 160 uses the classic CLAAS threshing unit which consistently provides impressive proof of its ability to handle the two key threshing tasks of removing and separating grains reliably in all harvest conditions. Regardless of the harvesting challenges you face, you'll be impressed by the versatile performance it delivers across the full threshing drum width of 1.06 m.

- The threshing unit can be easily accessed from the front via the feed rake and from both sides through large openings
- The extremely robust design of all the drives, and of the threshing drum drive in particular, ensures top reliability during the harvest.



MULTICROP  
concave.



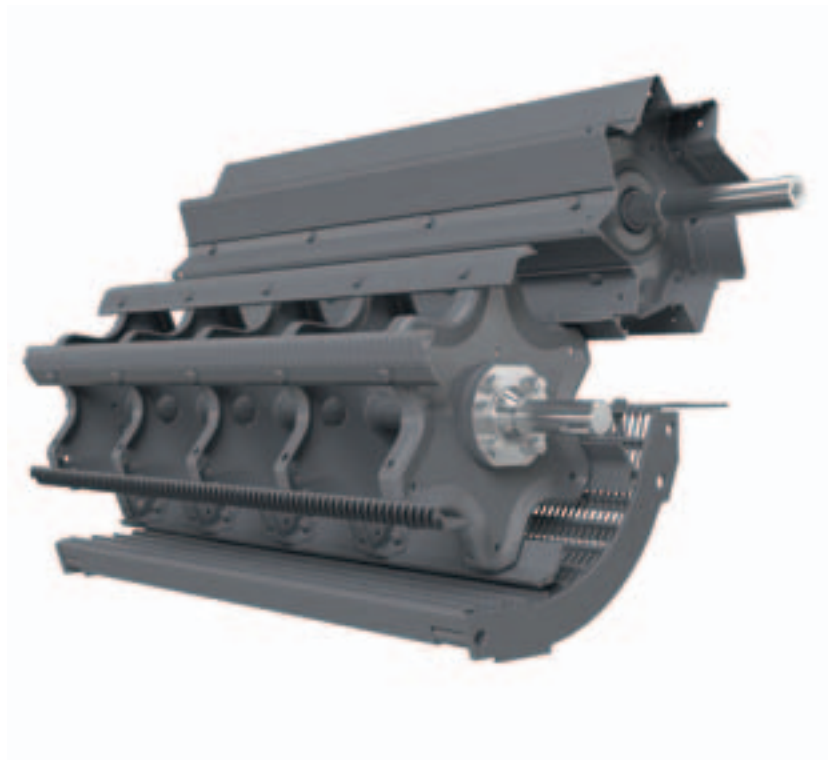
Fit for any crop.  
The MULTICROP concave.

The concave below the threshing drum is designed as a MULTICROP concave with individual segments that can be changed easily. You can switch the concave quickly for a wide assortment of crops - always ensuring the right combination of clean threshing, protective handling of the crop and a high separation rate.

The AVERO 160 is equipped with the classic CLAAS threshing unit.

Large stone trap.

The AVERO 160 also ensures outstanding safety thanks to the large stone trap. The stone trap is easy to open from the side and is self-emptying.



Self-emptying stone trap.

CLAAS threshing unit



### The CLAAS compact principle.

The APS threshing system works so efficiently that the residual grain separation system in the AVERO 240 requires fewer straw walkers than you'd expect. Thanks to APS, 90% of the grain is already separated from the straw. Four straw walkers with four steps take care of the remaining 10%. The AVERO 240 processes as much as a comparable machine with five straw walkers without APS, but has the compact dimensions of a machine with four straw walkers. This has a noticeable economic impact. The AVERO 160 also delivers above-average performance for its size: the classic CLAAS threshing unit works perfectly in combination with the four straw walkers.

### Four straw walker steps.

The four straw walkers of the AVERO have been completely redesigned and adapted to the high-performance APS threshing system. Residual grain separation is accomplished over a total length of 3,900 mm across four straw walker steps. Centre and side extensions available. Even large volumes of straw are transported rapidly and loosely.

### Active fluffing.

In addition, the straw undergoes intensive separation with controlled agitator tines. Agitator tines located above each straw walker dig deep into the straw, loosening and fluffing it to ensure a rapid straw flow and a thin layer of straw for the last grains to escape and effectively increase separation efficiency.



Intensive straw walker.

# Saving the right way.

## Complete control.

AVERO provides you with numerous monitoring aids for optimal utilisation of the installed features of the machine and to achieve the best possible threshing quality:

- Throughput monitor for the residual grain separation system and cleaning in the CIS
- Yield recording and fuel consumption measurement with CIS
- Returns fed back to threshing unit
- Illuminated inspection window for monitoring returns
- Crop monitoring in the grain tank via a large inspection window



Loss sensors.

Residual grain separation  
Straw walker technology

# A look into the grain tank: clean work.

## Powerful fan.

The AVERO has a high-performance fan for the best grain cleaning. Its speed can be controlled from the cab, providing constant air pressure and even distribution of air across the sieves to handle the varying loads of crop. Forced air guidance prevents the formation of crop mats.

In addition, the AVERO is equipped with the impressive features of the 3-D cleaning system developed by CLAAS:

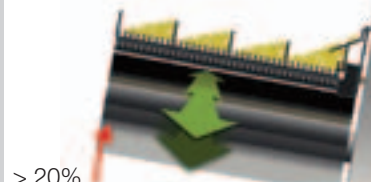
- Dynamic sidehill levelling via active control of the upper sieve
- Optimal performance consistency on gradients up to 20%
- No wear - completely maintenance free
- Fast, simple retrofitting

## Removable grain pan.

Pre-sorting of the grains (top) and the chaff and broken straw (bottom) takes place on the grain pan. The resulting reduction of the load on the upper sieve increases cleaning capacity. The grain pan can be removed easily for cleaning when the harvest is completed.



Without 3-D



With 3-D





### Large grain tank.

After the threshing unit, straw walker and cleaning processes have been completed, the cleaned grain is collected in the grain tank. One of the strengths of the AVERO is its capacity of up to 5,600 litres. However, this is but one of its many impressive attributes.

- Easy grain sampling
- High overhead discharge height
- Ideal weight distribution
- Good visibility in the grain tank
- Grain tank cover can be operated from the operator's platform
- Fast, direct offloading
- Smooth surfaces for fast, complete emptying

### Direct view into the grain tank.

Sometimes a glance into the grain tank can tell you more than any number of sensors. A large inspection window in the back of the AVERO cabin enables visual yield monitoring, so the returns are seen comfortably from the operator's seat. The inspection window is illuminated for better visibility.



Large grain tank volume  
 AVERO 240: 5,600 l  
 AVERO 160: 4,200 l

Cleaning system  
 Grain tank



### Short chopped material.

The AVERO distributes the uniformly short-chopped straw over the entire cutterbar width and blows it deep into the stubble. The discharge width is easily adjustable. Chopping takes place using rotating knives and a stationary cutting comb. The CLAAS choppers are also equipped with a ledger plate. Both components can be individually adjusted and thus adapted to the varying straw conditions. This ensures that no blade is left uncut.

### PROFI CAM – everything in view.

All AVERO models can be equipped with a PROFI CAM on the rear hood. This camera position has been chosen precisely to allow two areas to be monitored simultaneously on a colour display from the comfort of the cab:

- Distribution of chopped material / straw deposition
- Rear of machine when reversing

Up to four cameras can be connected to the system and simultaneously feed their images to the colour monitor in the cab.

PROFI CAM.





# From small and short to long and loose.

## Top-quality straw.

AVERO handles long straw very gently. Thanks to the protective threshing and separation process, the straw retains its full original structure, which is ideal for high-quality bedding straw. When the straw chopper is switched off, the swath is layered loosely, allowing it to dry quickly and be baled easily.



Straw management  
PROFI CAM

# High performance in a compact package.

Optimal drive for best results.

Equipment development at CLAAS means an ongoing effort for even greater efficiency and reliability as well as optimal profitability in the field.

This applies of course to all aspects of a CLAAS combine harvester. The drive system is of decisive importance. And that requires a lot more than just a powerful engine.

In CLAAS POWER SYSTEMS (CPS), we have brought together the best components in a drive system in a class of its own. One that always delivers the greatest power when needed. Ideally matched to the work systems and with fuel-saving technology that quickly pays for itself.





"Fields far apart, steep slopes and inclines – none of this should prevent me from achieving the same good result."

CLAAS POWER SYSTEMS

# Using brawn and brains to get the job done.

## An engine as strong as an ox.

The rugged 6.6-litre Caterpillar engine has plenty of reserve capacity and powers the AVERO through long, productive work sessions even under tough field conditions. State-of-the-art technology keeps diesel consumption remarkably low.

- Caterpillar C 6.6 engine
- Emission standard Stage IIIa (Tier 3)
- Common rail technology
- Optimised combustion process
- Better engine performance
- Low fuel consumption
- Optimal power transmission
- 400-litre fuel tank



AVERO 240: 198 HP (ECE R 120).  
AVERO 160: 158 HP (ECE R 120).



## Intelligent ground drive.

No engaging and disengaging the clutch, no shifting gears - just full concentration on the harvest. You control the innovative, hydrostatic ground drive of the AVERO conveniently and comfortably with the multifunction lever.

Such operating comfort enhances performance. You can turn faster and adapt the ground speed immediately to the changing field conditions. The high pump volume ensures responsive handling under all conditions.



AVERO 240: 400 litre fuel tank capacity.  
AVERO 160: 400 l / 320 l fuel tank capacity.

Engine  
Drive



### Fast access.

Maintenance is very simple requiring little effort and time and the service intervals for the AVERO are long. All important maintenance points are easily accessible, and the best part is that much of the work can be done quickly by the operator.

### Easy maintenance.

- Pivoting radiator frame for fast manual cleaning
- Large, continuous side panels for unimpeded access
- Simple access to the engine compartment and other maintenance areas with a mobile, foldable ladder
- Rear hood opens if necessary
- Long servicing intervals
- Lubrication banks
- Storage box for tools



# The compact class gives you speed.

## Tyres on the drive axle

Tyre size	Outer width (m)
18.4-30 12 PR	2.68
23.1-26 12 PR R1 KB F20	3.03
23.1-26 12 PR R1 KB F16	2.82
620/75 R 26	3.03
620/75 R 30	2.96
650/75 R 32	2.98
28 LR 26	3.18
750/65 R 26	3.14
800/65 R 32	3.28

## Tyres on the steering axle

Tyre size	Outer width (m)
11.5/80-15.3	2.75
12.5/80-18	2.68
14.5/75-20	2.71
400/65 R 24	2.93
500/60-22.5	2.89



Maintenance  
Tyres

# The compact class gives you security and safety.

## Support around the clock.

You can depend on professional, reliable support from the FIRST CLAAS SERVICE® team at all times. Around the clock, CLAAS importers and dealers around the world ensure an optimum supply of parts and offer reliable customer service.

## We're there wherever you are.

Our central spare parts warehouse delivers all ORIGINAL CLAAS parts quickly and reliably throughout the world. The large number of CLAAS partners ensures that they'll reach their destination in a very short time, no matter where you are.

## Our diagnostics are reliable.

Our service specialists' years of experience and state-of-the-art diagnostic systems such as CDS ensure that troubleshooting goes quickly.

## We speak the same language.

CLAAS dealers are among the world's most capable agricultural engineering companies. Not only are they highly trained and equipped with the right tools, they also have an intimate knowledge of how farmers and contractors work. They understand your expectations and can meet your requirements for professional expertise and reliability.







## We ensure your success.

CLAAS offers you the highest level of safety and professional expertise with service packages you can rely on and the individual CLAAS MAXI CARE® programme.

Post-harvest and annual inspections to ensure top performance; service contracts with fixed prices and flexible extended warranty options enable you to plan and manage your costs transparently and accurately.

The comprehensive package for maintenance and repair:

- Post-harvest/annual inspection. Well checked is better prepared!
- Maintenance contracts: FIRST CLAAS quality and maintenance at a fixed price
- MAXI CARE®. The security and safety of comprehensive protection



FIRST CLAAS SERVICE®  
MAXI CARE®

# Outstanding technology.

The AVERO 240.

Deluxe cab

CIS

MultiCoupler

VARIO table

Folding divider

Hydrostatic reel drive



APS

Intensive straw walker

Caterpillar engine

PROFI CAM

Straw chopper

3-D cleaning system

High-performance straw walker

High-velocity cleaning fan



Technology in detail

# Outstanding technology.

The AVERO 160.

Deluxe cab

CIS

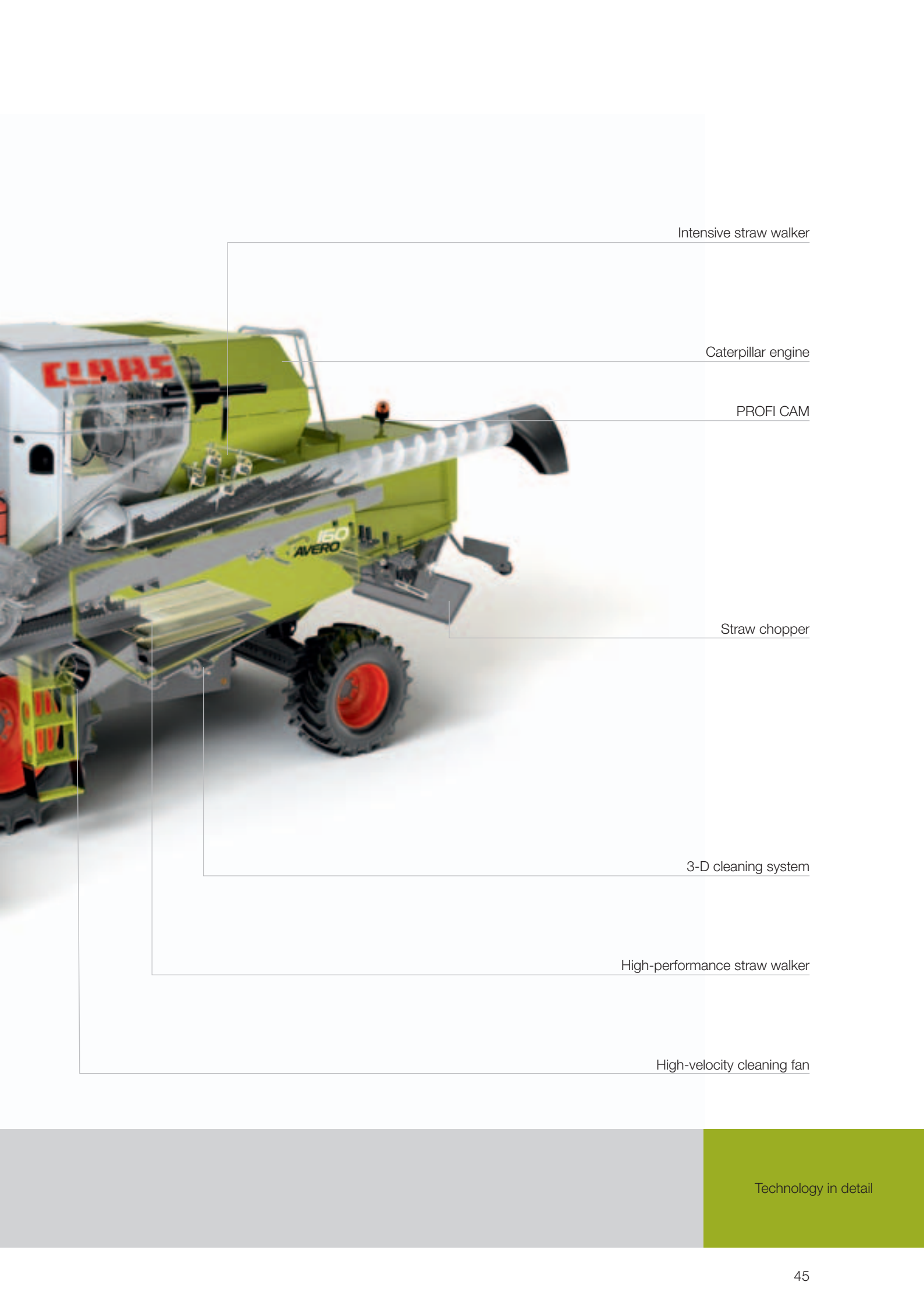
MultiCoupler

VARIO table

Folding divider

Hydrostatic reel drive





Intensive straw walker

Caterpillar engine

PROFI CAM

Straw chopper

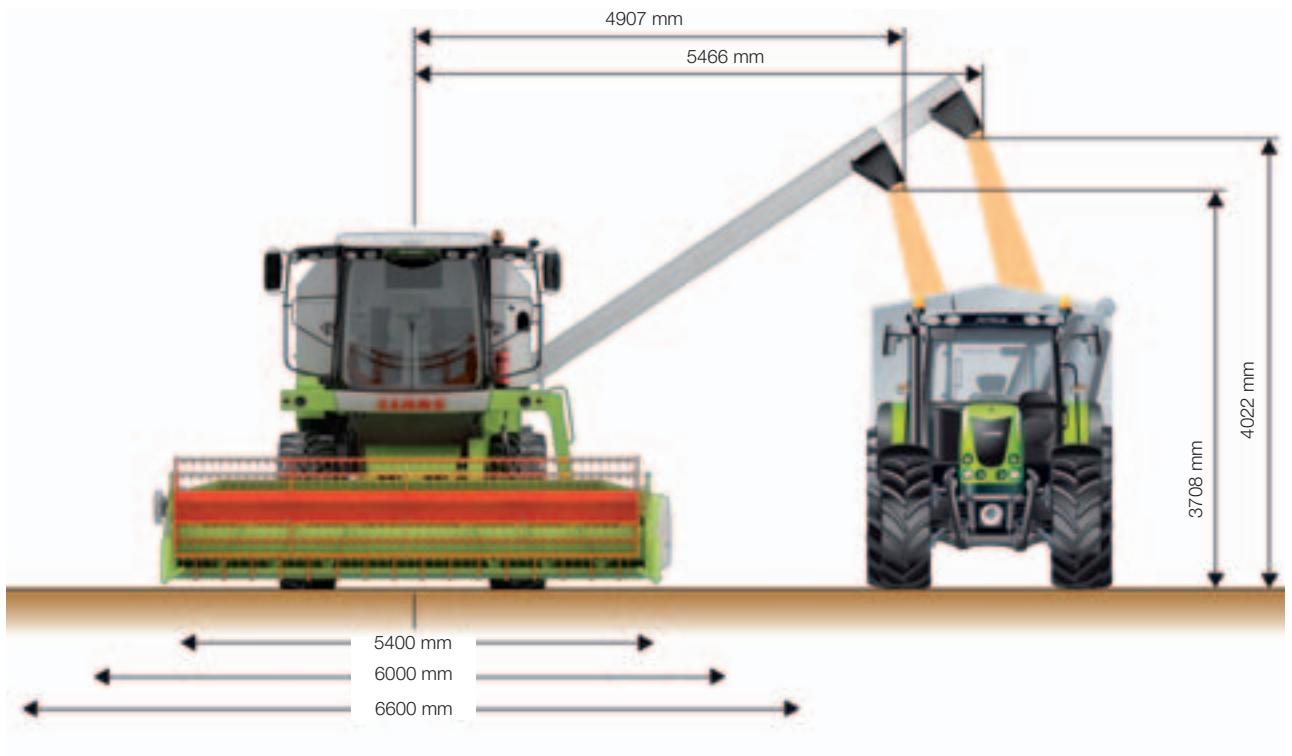
3-D cleaning system

High-performance straw walker

High-velocity cleaning fan

Technology in detail

Convenient offloading requires height and width.



# AVERO

		240	160
<b>Cutterbar</b>			
Cutting widths available	m	C 660 (6.68 m), C 600 (6.07 m), C 540 (5.46 m), C 490 (4.92 m), C 430 (4.32 m), C 370 (3.71 m)	C 600 (6.07 m), C 540 (5.46 m), C 490 (4.92 m), C 430 (4.32 m), C 370 (3.71 m)
Folding dividers		●	●
Spacing: knife bar - intake auger	mm	580	580
Cutting frequency	strokes/ min	1120	1120
Multifinger intake auger		●	●
Hydraulic reverser		●	●
Hydrostatic reel drive	rpm	8–60	8–60
Electrohydraulic reel speed adjustment		●	●
Electrohydraulic reel height adjustment		●	●
Electrohydraulic horizontal reel adjustment		●	●
Automated cutterbar control			
CONTOUR		●	●
AUTO CONTOUR		○	○
Automatic reel speed control		○	○

<b>VARIO cutterbar</b>			
Cutting widths available	m	V 600 (6.07 m), V 540 (5.46 m)	V 540 (5.46 m)
Folding dividers		●	●
Spacing: knife bar - intake auger	mm	480–780, for rapeseed 1080	480–780, for rapeseed 1080
Multifinger intake auger		●	●
Hydraulic reverser		●	●
Hydrostatic reel drive	rpm	8–60	8–60
Electrohydraulic reel speed adjustment		●	●
Electrohydraulic reel height adjustment		●	●
Electrohydraulic horizontal reel adjustment		●	●
Automated cutterbar control			
CONTOUR		●	●
AUTO CONTOUR		○	○
Automatic reel speed control		○	○

<b>Threshing system</b>			
APS acceleration and pre-separation		●	–
Accelerator rpm		80% of the threshing drum	–
MULTICROP concave		●	●
Drum width	mm	1060	1060
Drum diameter	mm	450	450
Drum speed 650-1500 rpm	rpm	●	●
Drum speed 500-1400	rpm	●	●
Threshing drum speed reduction	rpm	300, 430, 550	300, 430, 550
Angle of wrap of the pre-cleaning concave	degrees	60	–
Concave wrap angle	degrees	151	117
Externally folding deawner plates		●	–
Concave adjustment from the cab, 1 lever for proportional adjustment of both concaves		●	–
Concave adjustment from the cab, 1 lever for proportional adjustment		–	●
Large stone trap		●	●

<b>Residual grain separation</b>			
Straw walkers	quantity	4	4
Straw walker steps	quantity	4	4
Walker length	mm	3900	3900
Straw walker area	m <sup>2</sup>	4.13	4.13
Separation area	m <sup>2</sup>	4.8	4.8
1 intensive separation system		●	●

● Standard   ○ Option   – Not available

CLAAS continually develops its products to meet customers' requirements, so all products are subject to change without notice. All descriptions and specifications in this brochure should be considered approximate and may include optional equipment that is not part of the standard specifications. This brochure is designed for worldwide use. Please consult your nearest CLAAS dealer and their price list for local specification details. Some protective panels may have been removed for photographic purposes in order to present the function clearly. Never remove these protective panels yourself to avoid hazards. Please refer to the relevant instructions in the operator's manual in this regard.

# AVERO

	240	160
<b>Cleaning system</b>		
Removable preparation floor	●	●
Fan	High-velocity cleaning blower	High-velocity cleaning blower
Electric fan adjustment	●	●
Divided, counterdirectional sieve pan	●	●
3-D cleaning system	○	○
Sieves	2-track	2-track
Chaffer sieve	●	●
Total sieve area	m <sup>2</sup> 3.00	3.00
Returns feed to threshing system	●	●
Visible from the cab on the go	●	●

<b>Grain tank</b>			
Volume	l	5600	4200
Pivoting angle	degrees	101	101
Offloading rate	l/s	51	51

<b>Chopper</b>		
STANDARD CUT chopper	●	●

<b>Engine</b>			
Manufacturer		Caterpillar	Caterpillar
Model		C 6.6	C 6.6
Cylinders / displacement	No./l	S 6/6.6	S 6/6.6
Engine control		electronic	electronic
Rated speed		2200	2200
Maximum power (ECE R 120)	kW/HP	146/198	116/158
Emission standard Stage IIIa (Tier 3)		●	●
Fuel tank volume	l	400	400/320

<b>Front attachments</b>			
Standard cutterbars		C 660–C 370	C 600–C 370
VARIO cutterbars		V 600–V 540	V 540
Rapeseed attachment		for all standard and VARIO cutterbars	
CONSPEED LINEAR		4-70 C, 4-75 C, 5-70 C, 5-75 C	4-70 C, 4-75 C, 5-70 C, 5-75 C
FLEX cutterbars		S 600–S 510	S 600–S 510
Folding cutterbars		C 450	–
RAKE UP		P 420	P 420

<b>Tyres</b>			
front		18.4-30 12 PR	18.4-30 12 PR
		23.1-26 12 PR R1 KB F20	23.1-26 12 PR R1 KB F20
		23.1-26 12 PR R1 KB F16	23.1-26 12 PR R1 KB F16
		620/75 R 30	620/75 R 30
		650/75 R 32	650/75 R 32
		28 LR 26	28 LR 26
		750/65 R 26	750/65 R 26
		800/65 R 32	800/65 R 32
rear		–	11.5/80-15.3
		12.5/80-18	12.5/80-18
		14.5/75-20	14.5/75-20
		400/65 R 24	400/65 R 24
		500/60-22.5	500/60-22.5

<b>Weight</b>			
Without cutterbar, chopper <sup>1</sup>	kg	8700	8250

● Standard – Not available

<sup>1</sup> Can vary according to equipment



# Compact design gives you independence.

- The spacious VISTA CAB provides an exceptionally quiet environment which allows you to focus on your work
- Visual returns check from the operator's seat through the illuminated inspection window
- The multifunction lever, CLAAS INFORMATION SYSTEM (CIS) and electrohydraulic control of the cutterbar, threshing unit and grain tank offloading system ensure comfortable steering and control
- VARIO cutterbars improve performance by up to 10% due to even crop flow
- CONSPEED LINEAR, RAKE UP, the folding cutterbar and the FLEX cutterbar provide versatile harvesting solutions
- Up to 20% more throughput with APS without any increase in fuel consumption
- MULTICROP concaves are quick and easy to change to match harvesting conditions
- The highly effective CLAAS Intensive Separation System (ISS)
- 3-D cleaning system for slopes up to 20%
- Enlarged grain tank with a volume of 5,600 litres
- Caterpillar C 6.6 meets the latest emission standards and provides reliable reserves of power under the toughest field conditions
- Ground drive with state-of-the-art hydrotechnology
- Easy access for maintenance
- FIRST CLAAS SERVICE® around the clock



CLAAS UK  
Saxham  
Bury St. Edmunds  
Suffolk  
IP28 6QZ  
Tel 01284 763100  
[claas.co.uk](http://claas.co.uk)  
[info-uk@claas.com](mailto:info-uk@claas.com)  
121012130712 KK Be 0812